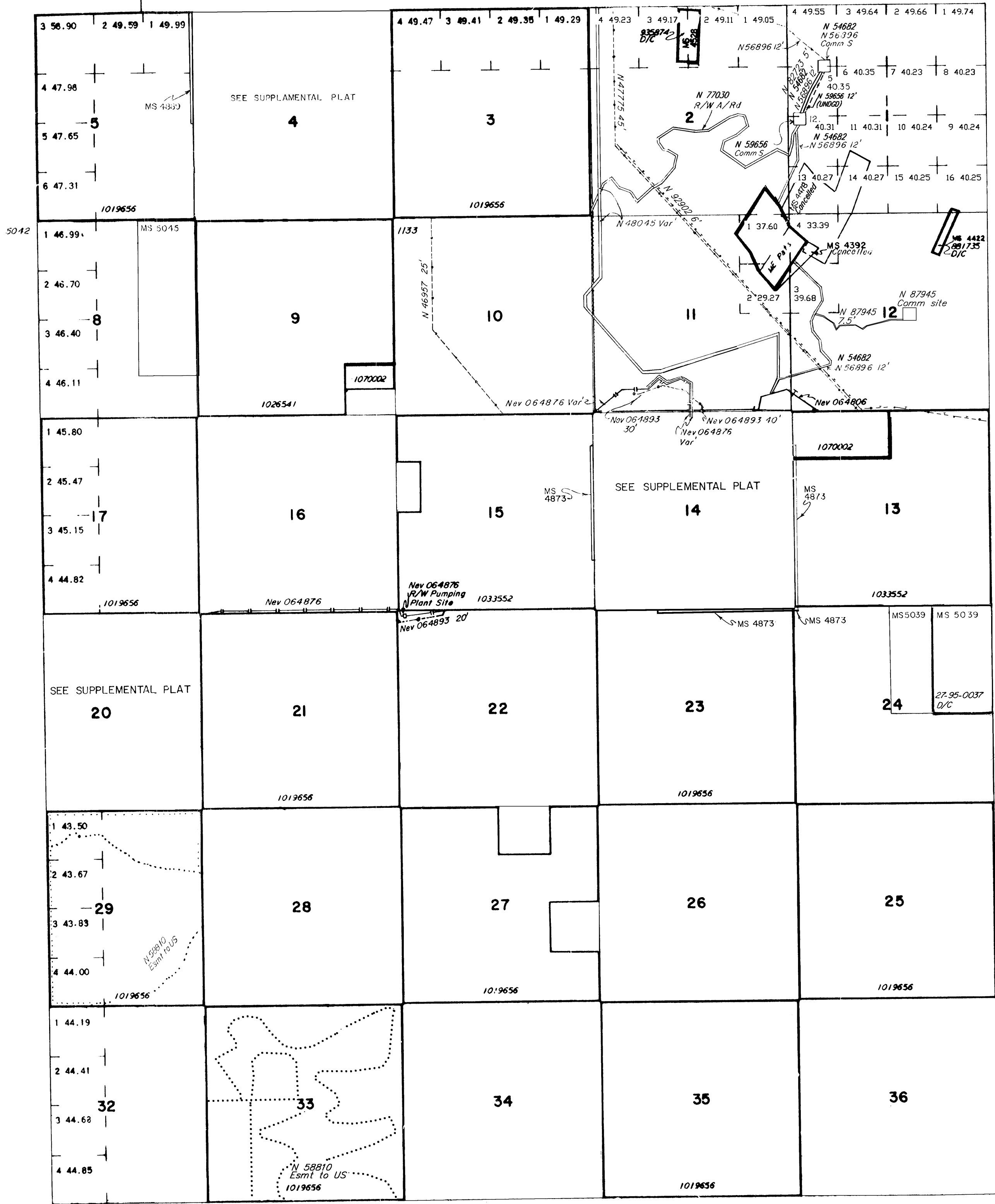


TOWNSHIP 35 NORTH RANGE 50 EAST OF THE MOUNT DIABLO MERIDIAN, NEVADA

EUREKA COUNTY
ELKO GR DIST

STATUS OF PUBLIC DOMAIN
LAND AND MINERAL TITLES

MT PLAT

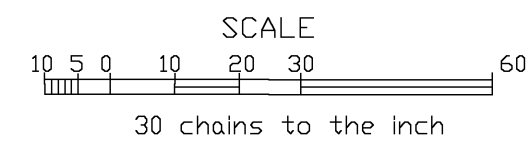


INDEX TO SEGREGATED TRACTS				
RESURVEY	ORIGINAL SURVEY			
	TRACT NO	T	R	SUBDIVISION

FOR ORDERS EFFECTING DISPOSAL OR USE OF
UNIDENTIFIED LANDS WITHDRAWN FOR CLASSIFICATION,
MINERALS, WATER AND/OR OTHER PUBLIC PURPOSES,
REFER TO INDEX OF MISCELLANEOUS DOCUMENTS.

- Sec 1: Lots 3, 5, 12, 13
- Sec 11: SE 1/4 SE 1/4
- Sec 12: W 1/2 SW 1/4
- N 58752 Esmt to US affects
- Sec 3: All, W/1
- Sec 4: SE 1/4, W/1
- Sec 5: Lots 2, 3, 4, W/1
- Sec 9: NE 1/4 NE 1/4, W/1
- Sec 17: Lots 1, 2, W/1
- N 59656 R/W Comm S, Powerline B A/Rd
- Sec 1: Lots 1, 5, 12, 13, W/1
- Sec 2: SE 1/4 SE 1/4, W/1
- Sec 11: SE 1/4 SE 1/4, W/1
- Sec 12: Lots 1, 2, W 1/2 SW 1/4, W/1
- N 95132 AML Physical Safety Closure Reclamation Closure
Project dated 12/13/2017 affects:
- Sec 4: NW 1/4 SE 1/4, NW 1/4 SW 1/4
- Sec 12: NW 1/4 NE 1/4, NW 1/4 SW 1/4, NW 1/4 SE 1/4
- Sec 22: NW 1/4 SE 1/4
- Sec 24: NW 1/4 SE 1/4
- Sec 28: SE 1/4 SE 1/4

Lat. 40°48'N
Long. 116°16'W



WARNING STATEMENT
This plat is the Bureau's representation of the Record of Title and should be used only as a graphic display of the township survey data. Records hereon do not reflect title changes which may have been effected by the lateral movements of rivers or other bodies of water. Refer to the cadastral surveys for official survey information.

CURRENT TO	BY
10/22/02	MS
1/6/04	MS
10/27/09	MS
12/9/09	MS
3/14/11	MS
7/28/14	DMG
2/12/18	FC
3/12/18	FC

N 010
T. 35N
R. 50E