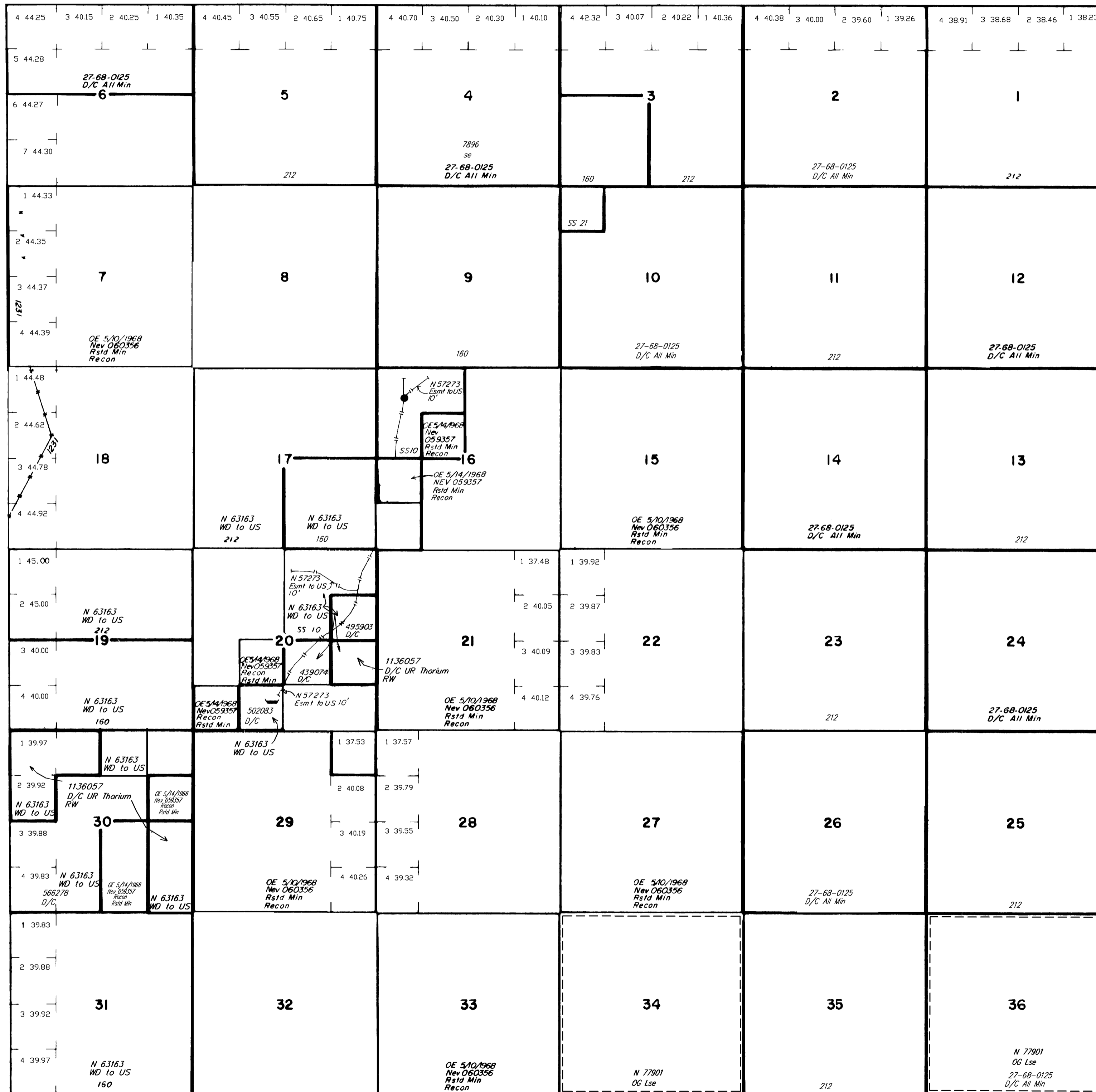


TOWNSHIP 34 NORTH RANGE 53 EAST OF THE MOUNT DIABLO MERIDIAN, NEVADA

ELKO COUNTY
ELKO GR DIST

STATUS OF PUBLIC DOMAIN
LAND AND MINERAL TITLES

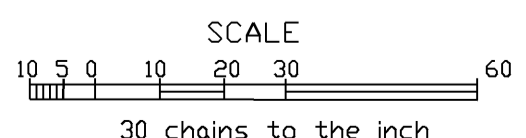
OG PLAT



INDEX TO SEGREGATED TRACTS				
RESURVEY TRACT NO.	ORIGINAL SURVEY			
	T	R	SEC	SUBDIVISION

FOR ORDERS EFFECTING DISPOSAL OR USE OF UNIDENTIFIED LANDS WITHDRAWN FOR CLASSIFICATION, MINERALS, WATER AND/OR OTHER PUBLIC PURPOSES, REFER TO INDEX OF MISCELLANEOUS DOCUMENTS.

Blank space for recording orders and miscellaneous documents.



WARNING STATEMENT
This plat is the Bureau's representation of the Record of Title and should be used only as a graphic display of the township survey data. Records hereon do not reflect title changes which may have been effected by lateral movements of rivers or other bodies of water. Refer to the cadastral surveys for official survey information.

LAT. 40° 47' N
LONG. 116° 00' W

CURRENT TO	BY
8/8/11	MS
10/30/12	DMG
3/26/13	DMG
4/14/15	MS
5/13/15	MS

N-010
T. 34 N
R. 53 E