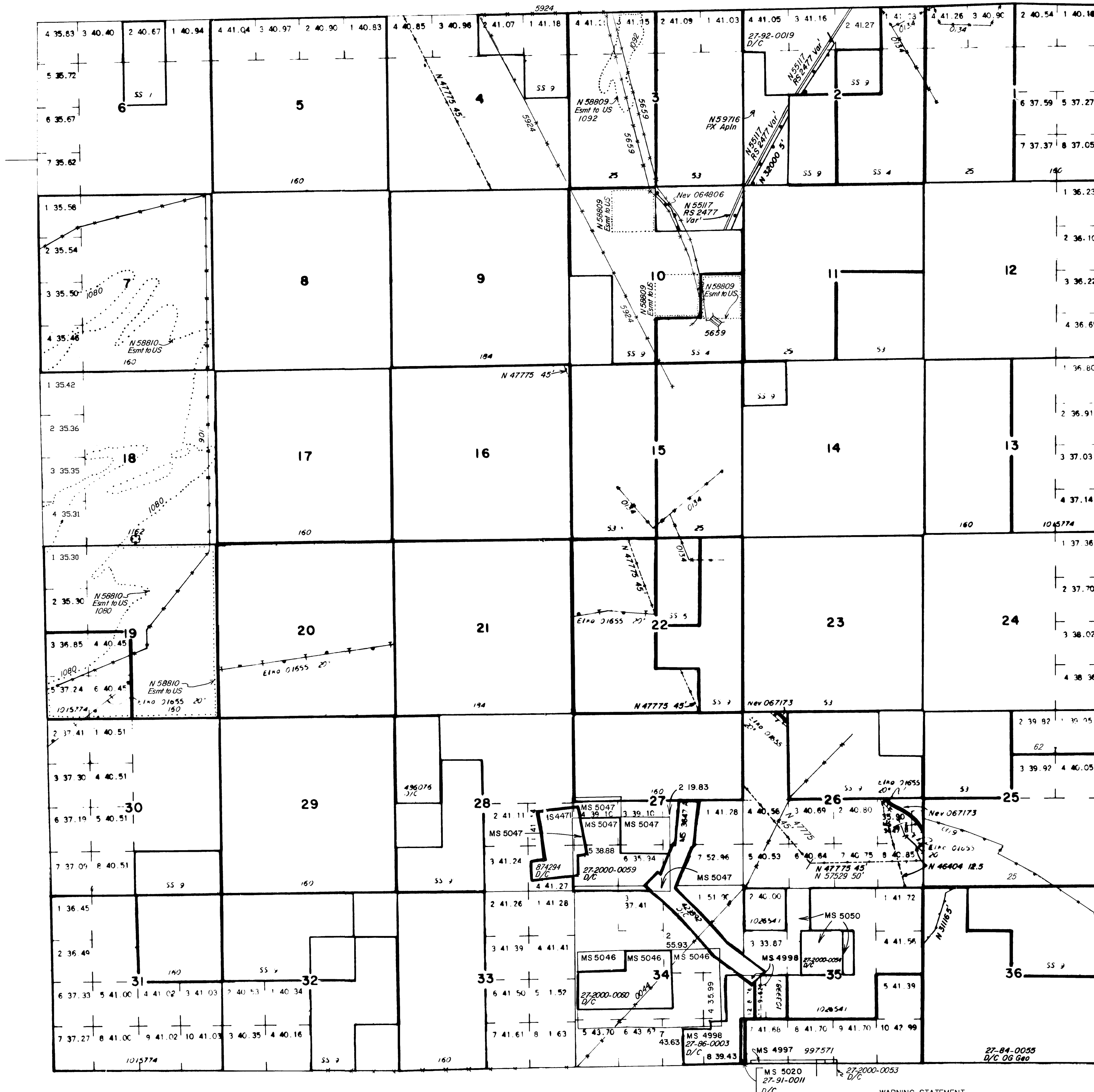


TOWNSHIP 34 NORTH RANGE 51 EAST OF THE MOUNT DIABLO MERIDIAN, NEVADA

EUREKA COUNTY
ELKO GR DIST

STATUS OF PUBLIC DOMAIN
LAND AND MINERAL TITLES

MT PLAT



INDEX TO SEGREGATED TRACTS				
RESURVEY	ORIGINAL SURVEY			
TRACT NO	T	R	SEC	SUBDIVISION

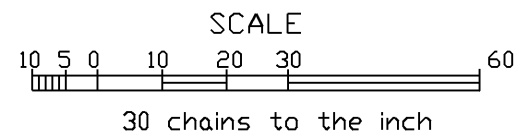
FOR ORDERS EFFECTING DISPOSAL OR USE OF UNIDENTIFIED LANDS WITHDRAWN FOR CLASSIFICATION, MINERALS, WATER AND/OR OTHER PUBLIC PURPOSES, REFER TO INDEX OF MISCELLANEOUS DOCUMENTS.

N 57529 Overhead Distribution Line
Sec 26: Lots a-e

N 56093 R/W Powerline
Sec 16: SE/4SW/4, NE/4SE/4, S/2SE/4, W/1
Sec 20: NE/4NE/4, S/2NE/4, SE/4NW/4, N/2SW/4, W/1
Sec 22: E/2NW/4, NE/4SW/4, SW/4SE/4, W/1
Set 26: lots 3,4,6-8, SW/4NW/4, W/1

DEPENDENT RESURVEY ACPT 2/10/1992

CURRENT TO	BY
3/19/04	MS
2/23/07	MS
12/20/11	MS



WARNING STATEMENT
This plat is the Bureau's Record of Title and should be used only as a graphic display of the township survey data. Records hereon do not reflect title changes which may have been effected by lateral movements of rivers or other bodies of water. Refer to the cadastral surveys for official survey information.

Lat. 40°45'N
Long. 116°12'W