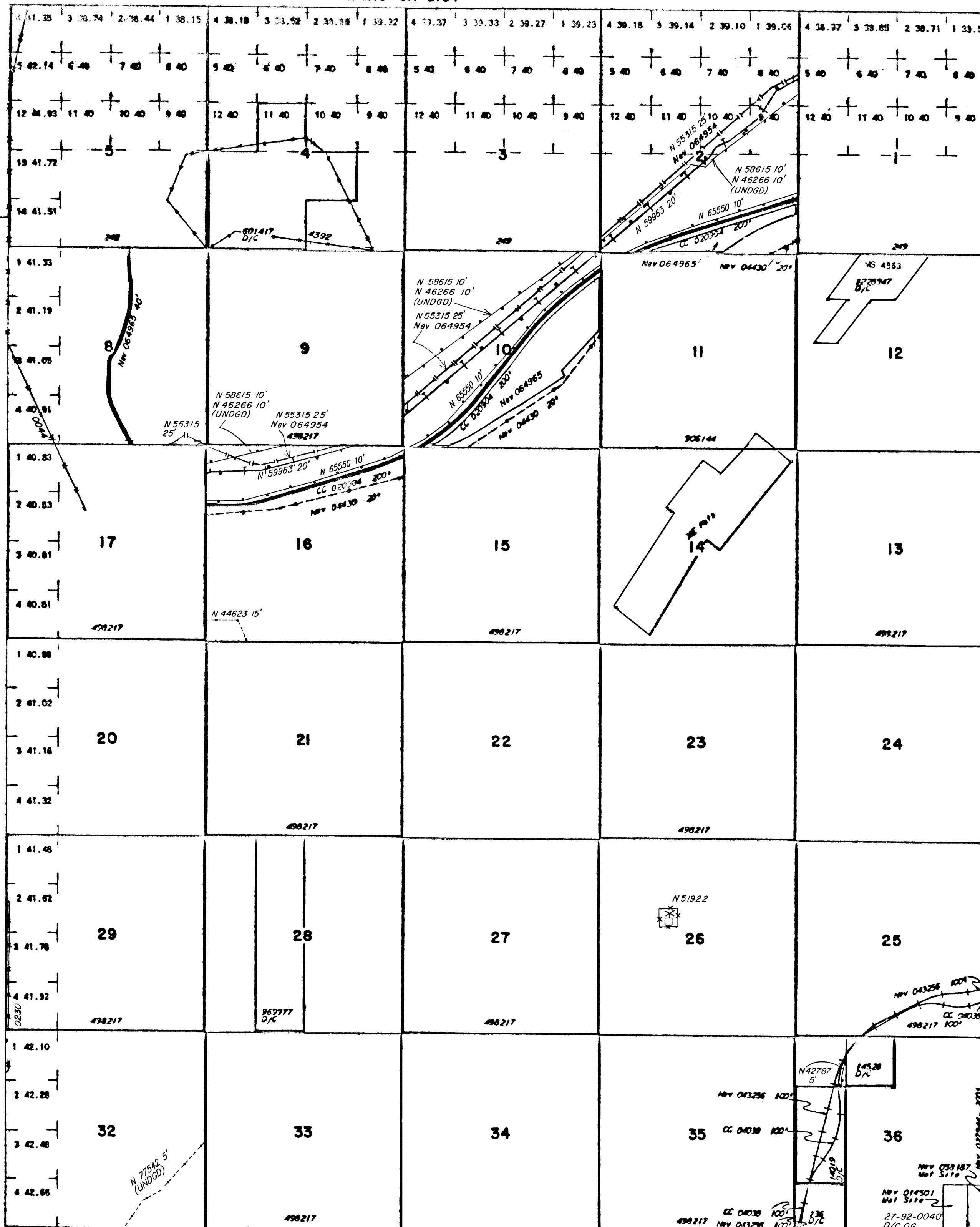


TOWNSHIP 32 NORTH RANGE 51 EAST OF THE MOUNT DIABLO MERIDIAN, NEVADA

EUREKA COUNTY
ELKO GR DIST

STATUS OF PUBLIC DOMAIN
LAND AND MINERAL TITLES

OG PLAT

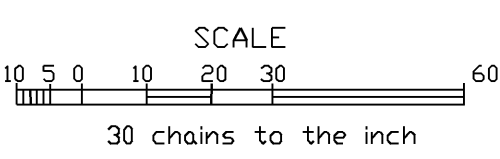


INDEX TO SEGREGATED TRACTS

RESURVEY	ORIGINAL SURVEY		
TRACT NO	T	R	SUBDIVISION

FOR ORDERS EFFECTING DISPOSAL OR USE OF UNCLASSIFIED LANDS WITHDRAWN FOR CLASSIFICATION, MINERALS, WATER AND/OR OTHER PUBLIC PURPOSES, REFER TO INDEX OF MISCELLANEOUS DOCUMENTS.

Nev 064965 R/W Hwy in addition to lands shown affects Sec 16 SW 1/4 NW 1/4, SE 1/4 NW 1/4, NE 1/4 NW 1/4, NW 1/4 NE 1/4, SW 1/4 NE 1/4, NE 1/4 NE 1/4



WARNING STATEMENT
This plat is the Bureau's Record of Title and should be used only as a graphic display of the township survey data. Records herein do not reflect title changes which may have been effected by lateral movements of rivers or other bodies of water. Refer to the cadastral surveys for official survey information.

CURRENT TO	BY
8/11/03	MS
6/10/05	MS
12/9/09	MS
12/17/09	MS

Lat. 40°35'N
Long. 116°14'10"W

N 010
T. 32N
R. 51E