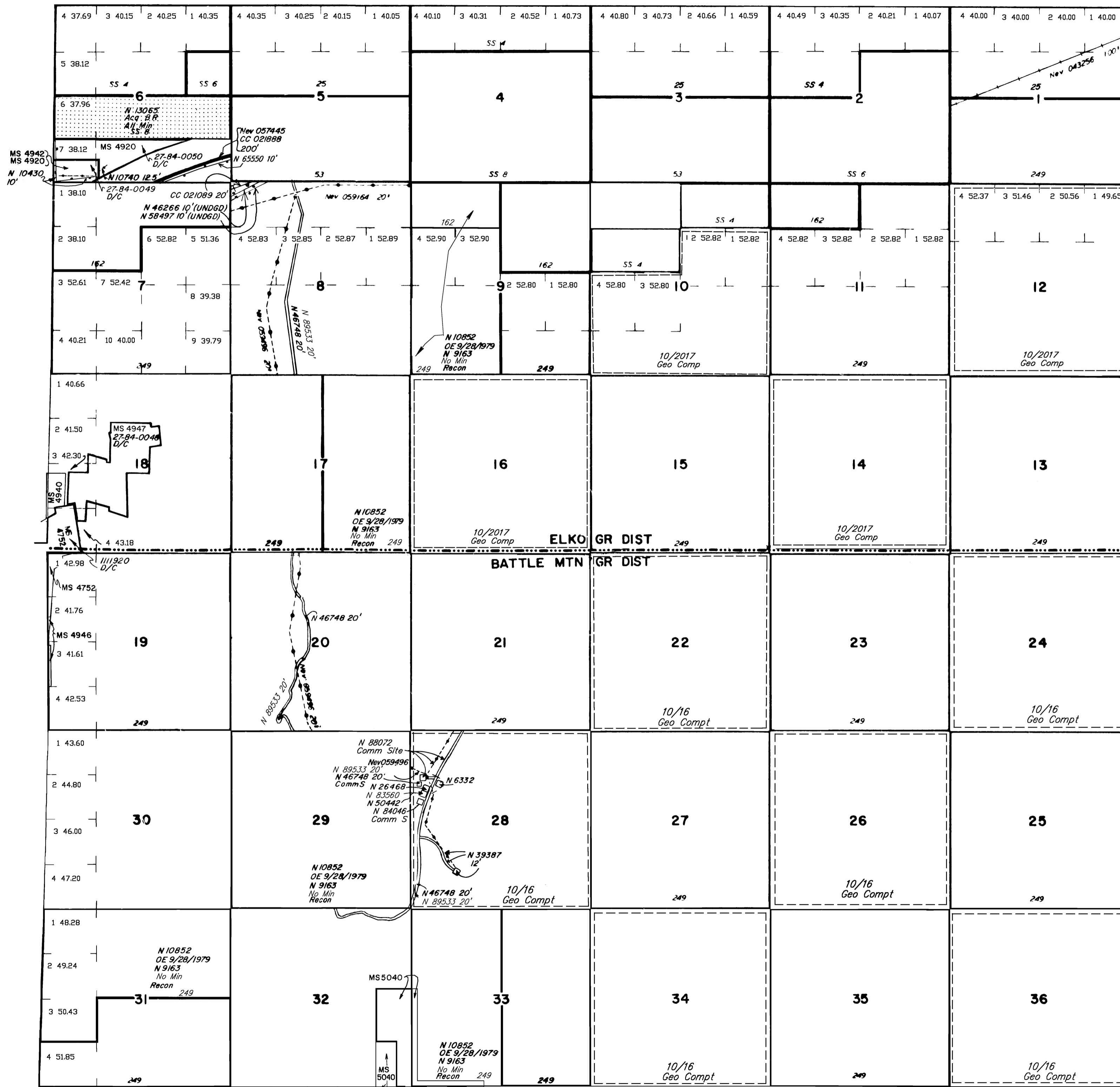


TOWNSHIP 32 NORTH RANGE 47 EAST OF THE MOUNT DIABLO MERIDIAN, NEVADA

LANDER COUNTY

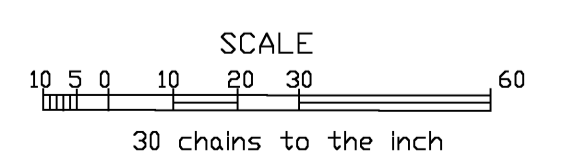
STATUS OF PUBLIC DOMAIN
LAND AND MINERAL TITLES
AND ACQUIRED LANDS

GEO PLAT



INDEX TO SEGREGATED TRACTS				
RESURVEY TRACT NO	ORIGINAL SURVEY			SUBDIVISION
	T	R	SEC	

FOR ORDERS EFFECTING DISPOSAL OR USE OF UNIDENTIFIED LANDS WITHDRAWN FOR CLASSIFICATION, MINERALS, WATER AND/OR OTHER PUBLIC PURPOSES, REFER TO INDEX OF MISCELLANEOUS DOCUMENTS.



WARNING STATEMENT
This plat is the Bureau's representation of the Record of Title and should be used only as a graphic display of the township survey data. Records hereon do not reflect title changes which may have been effected by the lateral movements of rivers or other bodies of water. Refer to the cadastral surveys for official survey information.

Lat. 40°35' N
Long. 117° 14' W

CURRENT TO	BY
10/31/16	DMG
1/13/17	DMG
8/15/17	DMG
6/2/10	MS
2/15/11	MS
5/11/11	MS
12/13/11	MS
9/26/12	DMG
7/28/15	MS
10/13/15	MS

N-010
N-060
T. 32 N
R. 47 E