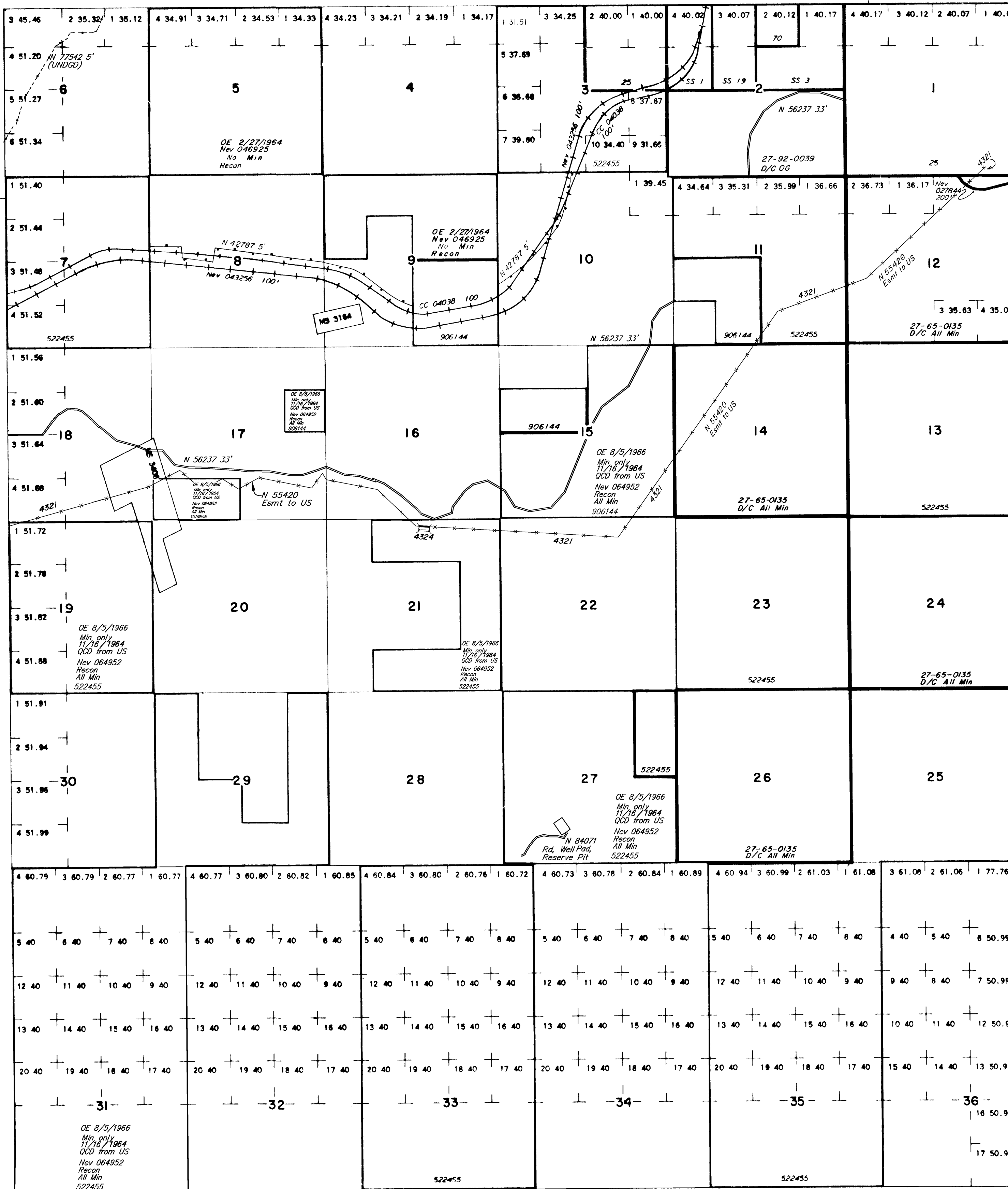


# TOWNSHIP 31 NORTH RANGE 51 EAST OF THE MOUNT DIABLO MERIDIAN, NEVADA

EUREKA COUNTY ELKO GR DIST

STATUS OF PUBLIC DOMAIN  
LAND AND MINERAL TITLES

## OG PLAT



INDEX TO SEGREGATED TRACTS				
RESURVEY	ORIGINAL SURVEY			
TRACT NO	T	R	SEC	SUBDIVISION

FOR ORDERS EFFECTING DISPOSAL OR USE OF UNIDENTIFIED LANDS WITHDRAWN FOR CLASSIFICATION, MINERALS, WATER AND/OR OTHER PUBLIC PURPOSES, REFER TO INDEX OF MISCELLANEOUS DOCUMENTS.

- CC 04038, Nev 043256 subject to all prior existing rights or claims
- N 56237 R/W RS 2477 A/Rd 33'
- Sec 2: SW1/4 SW1/4, N1/2 S1/2, SW1/4 SE1/4, W1/4
- Sec 10: NW1/4 SE1/4, S1/2 SE1/4, W1/4
- Sec 15: W1/2 NE1/4, NE1/4 SW1/4, S1/2 NW1/4, W1/4
- Sec 16: N1/2 SW1/4, S1/2 S1/2, W1/4
- Sec 17: N1/2 S1/2, W1/4
- Sec 18: lots 2, 3, S1/2 NE1/4, W1/4
- N 58751 Esmt to US
- Sec 21: NW1/4 NE1/4, NE1/4 NE1/4, SE1/4 NE1/4, NE1/4 NW1/4, SE1/4 SE1/4, W1/4
- Sec 23: N1/2, W1/4
- Sec 27: NW1/4 NW1/4, W1/4

N 95150 AML Physical Safety Closure Reclamation Project dated 12/13/2017 affects:

- Sec 17: SWNWSEW, SWNWSEW, SWNWSEW, SWNWSEW

CURRENT TO	BY	CURRENT TO	BY
11/15/07	MS		
12/17/09	MS		
3/20/2012	SLD		
2/13/18	FC		

**WARNING STATEMENT**  
This plat is the Bureau's representation of the Record of Title and should be used only as a graphic display of the township survey data. Records hereon do not reflect title changes which may have been effected by the lateral movements of rivers or other bodies of water. Refer to the cadastral surveys for official survey information.

Lat. 40°29'N  
Long. 116°14'10"W

SCALE  
0 10 20 30 40  
30 chains to the inch

N-010  
T. 31 N  
R. 51 E  
# 2