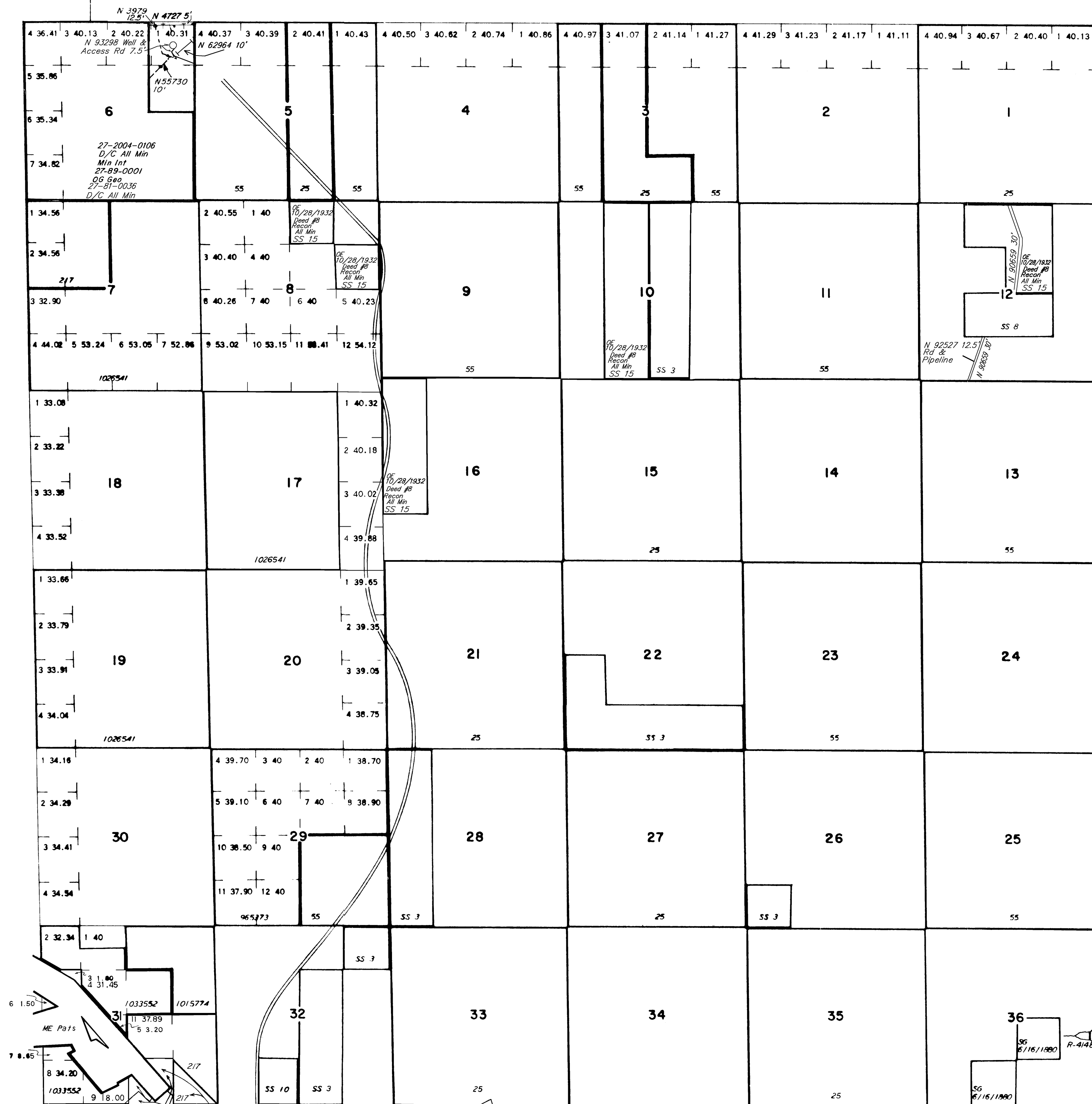


# TOWNSHIP 30 NORTH RANGE 46 EAST OF THE MOUNT DIABLO MERIDIAN, NEVADA

LANDER COUNTY  
BATTLE MTN GR DIST

STATUS OF PUBLIC DOMAIN  
LAND AND MINERAL TITLES

## MT PLAT

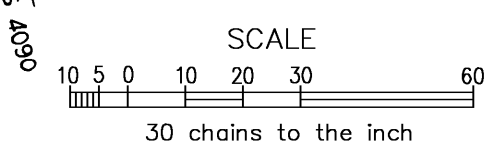


INDEX TO SEGREGATED TRACTS				
RESURVEY TRACT NO	ORIGINAL SURVEY			
	T	R	SEC	SUBDIVISION

FOR ORDERS EFFECTING DISPOSAL OR USE OF UNIDENTIFIED LANDS WITHDRAWN FOR CLASSIFICATION, MINERALS, WATER AND/OR OTHER PUBLIC PURPOSES, REFER TO INDEX OF MISCELLANEOUS DOCUMENTS.

Series of horizontal lines for recording information.

CURRENT TO	BY
7/8/04	MS
3/1/07	MS
9/19/11	MS
3/20/2013	SLL
8/27/13	DMG
12/31/13	MS
10/22/14	MS



WARNING STATEMENT  
This plat is the Bureau's representation of the Record of Title and should be used only as a graphic display of the township survey data. Records hereon do not reflect title changes which may have been effected by lateral movements of rivers or other bodies of water. Refer to the cadastral surveys for official survey information.

Lat. 40°26'N  
Long. 116°45'21' W

N-060  
T. 30 N  
R. 46 E  
# 1

GEO PLAT