

SURVEYED TOWNSHIP 28 NORTH RANGE 66 EAST OF THE MOUNT DIABLO MERIDIAN, NEVADA

ELKO COUNTY
ELKO GR DISTRICT

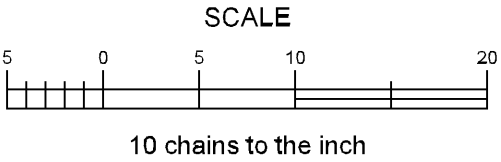
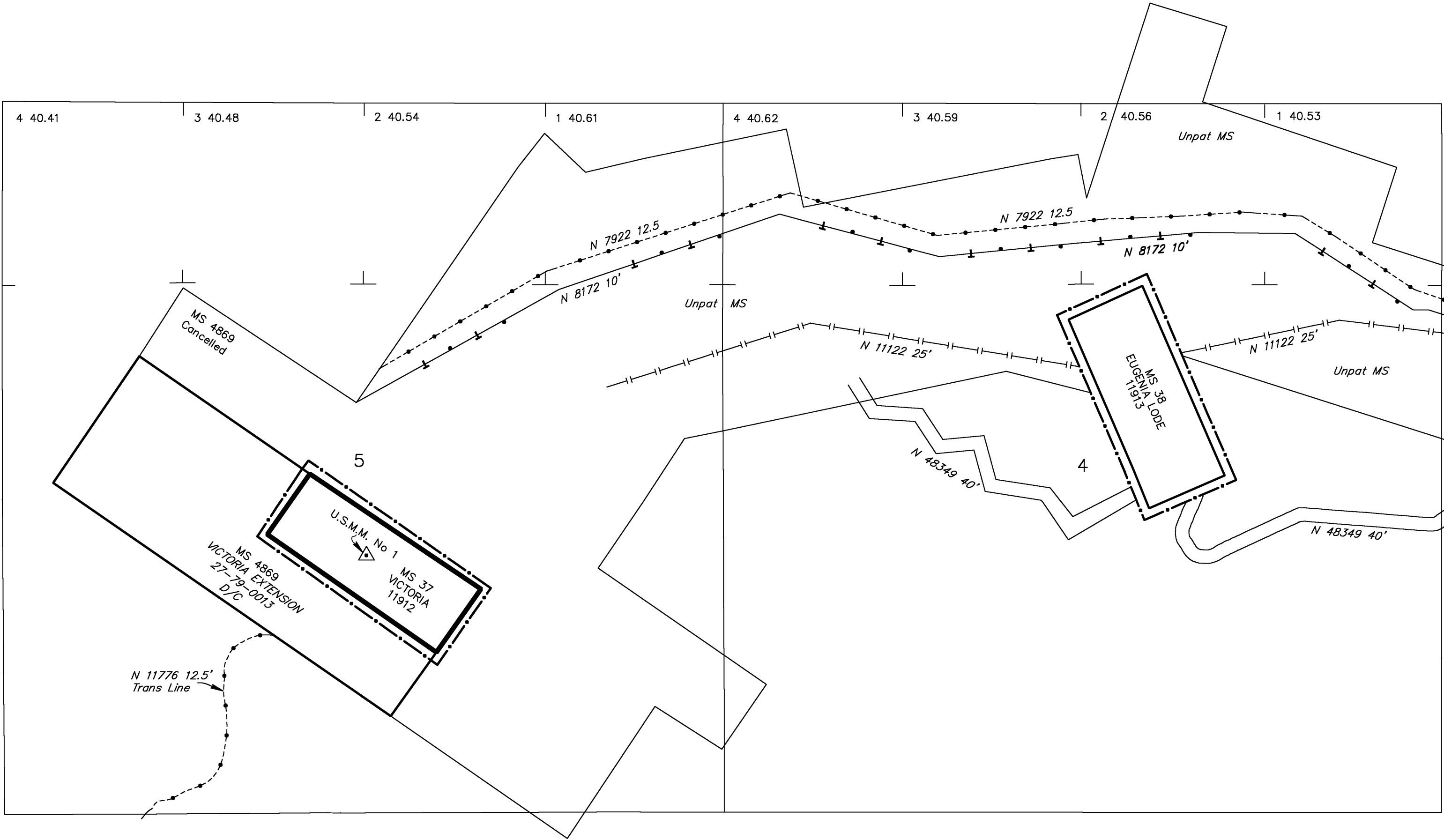
STATUS OF PUBLIC DOMAIN
LAND AND MINERAL TITLES
AND ACQUIRED LANDS

MT
SUPPL Secs 4, 5

INDEX TO SEGREGATED TRACTS				
RESURVEY	ORIGINAL SURVEY			
TRACT NO	T	R	SEC	SUBDIVISION

FOR ORDERS EFFECTING DISPOSAL OR USE OF
UNIDENTIFIED LANDS WITHDRAWN FOR CLASSIFICATION,
MINERALS, WATER AND/OR OTHER PUBLIC PURPOSES.
REFER TO INDEX OF MISCELLANEOUS DOCUMENTS.

N 93903 AML Physical Safety Closure Project
dated 6/16/2011 Affects:
Sec 4: NE1/4SW1/4, SE1/4SW1/4,
Sec 5: NE1/4SW1/4, NW1/4SE1/4,
Sec 12: NE1/4SE1/4, NW1/4SE1/4,
SW1/4SE1/4, SE1/4SE1/4,
SE1/4NE1/4,
Sec 16: SW1/4NW1/4NE1/4.



WARNING STATEMENT
This plat is the Bureau's representation of the Record of Title and should be used only as a graphic display of the township survey data. Records hereon do not reflect title changes which may have been effected by the lateral movements of rivers or other bodies of water. Refer to the cadastral surveys for official survey information.

CURRENT	TO	BY	CURRENT	TO	BY
	05/02/2025	KD			

PLAT TYPE

T. 28 N
R. 66 E
Sec 4, 5