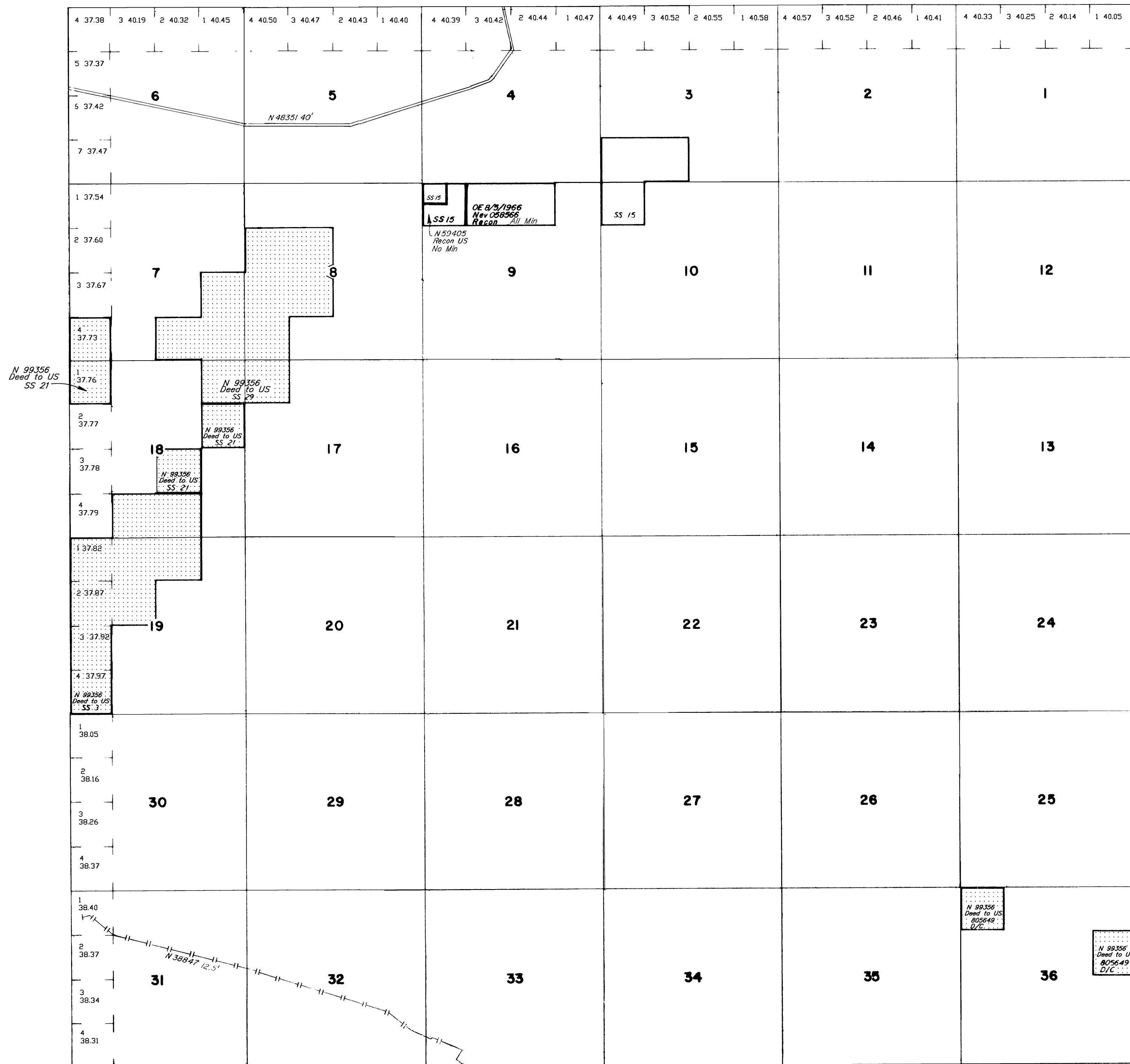


ELKO COUNTY
ELKO GR DIST

MT/USE PLAT

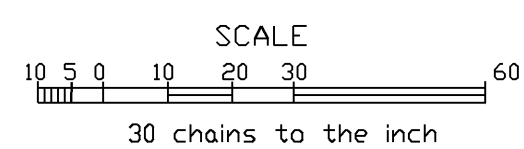
[illegible]

FOR ORDERS EFFECTING DISPOSAL OR USE OF
UNIDENTIFIED LANDS WITHDRAWN FOR CLASSIFICATION,
MINERALS, WATER AND/OR OTHER PUBLIC PURPOSES,
REFER TO INDEX OF MISCELLANEOUS DOCUMENTS.



Lot. 40° 15.3' N.
Long. 114° 55.3' W.

This plat is the Bureau's representation of the Record of Title and should be used only as a graphic display of the township survey data. Records hereon do not reflect title changes which may have been effected by the lateral movements of rivers or other bodies of water. Refer to the cadastral surveys for official survey information.



CURRENT TO	BY
12/29/11	MS
6/18/13	MS
10/5/16	DMG
1/14/20	DMG

PLAT TYPE

N-010
T. 28 N
R. 62 E