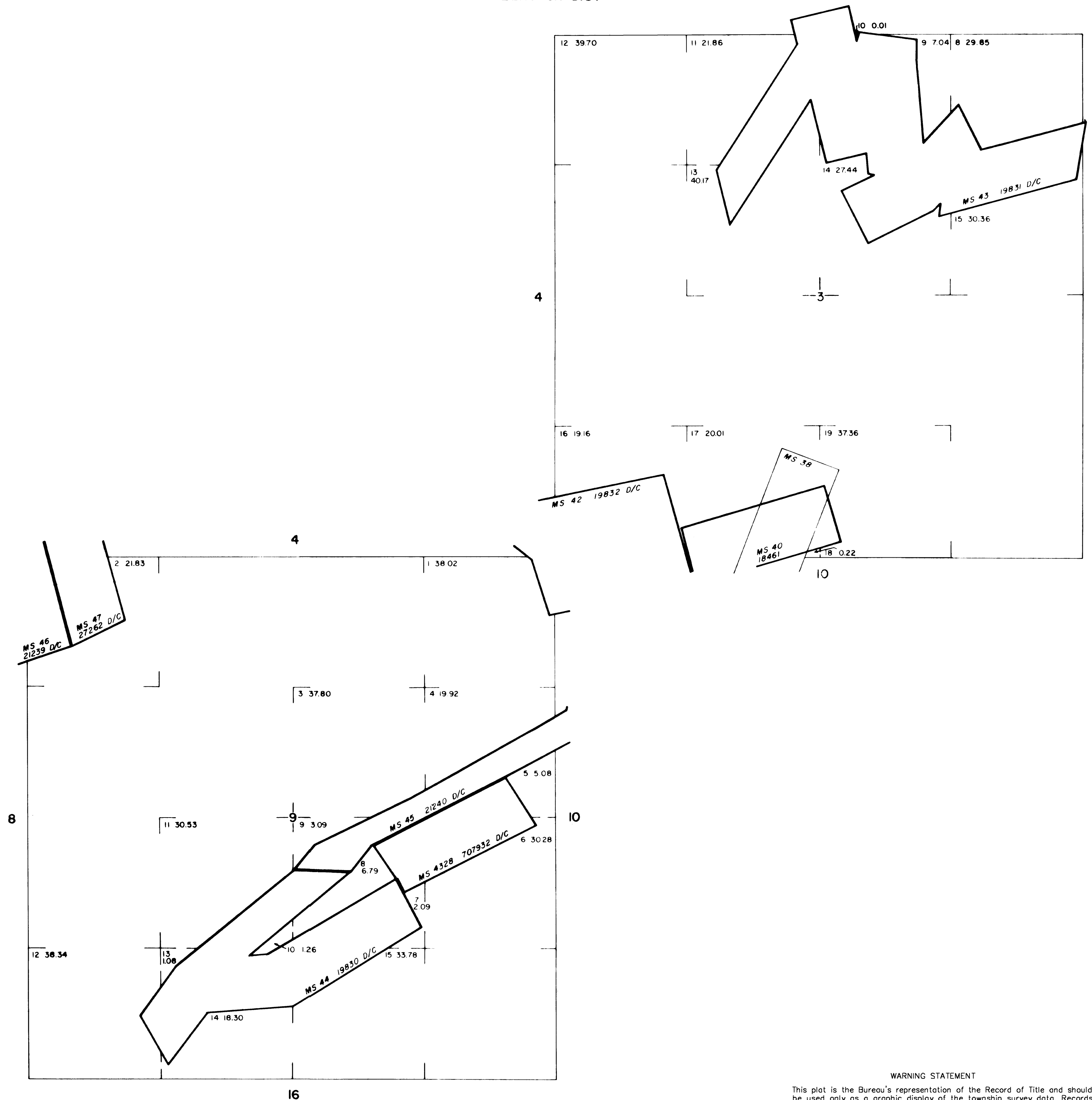


ELKO COUNTY  
ELKO GR DIST

**MTP  
SUPPL Secs. 3 & 9**

[illegible]

N 93913 AML Physical Safety Closure Project Affects:  
Secs: 2, 3, 4, 5, 8, & 9.



This plot is the Bureau's representation of the Record of Title and should be used only as a graphic display of the township survey data. Records hereon do not reflect title changes which may have been effected by lateral movements of rivers or other bodies of water. Refer to the cadastral surveys for official survey information.

## IC chains to the inch

[illegible]

N-010  
T 27N  
R 70E