

PARTIALLY SURVEYED TOWNSHIP 27 NORTH RANGE 36 EAST OF THE MOUNT DIABLO MERIDIAN, NEVADA

PROTRACTION DIAGRAM NO.282

PERSHING COUNTY
WINNEMUCCA GR DIST

STATUS OF PUBLIC DOMAIN LAND AND MINERAL TITLES AND ACQUIRED LANDS

GEO PLAT

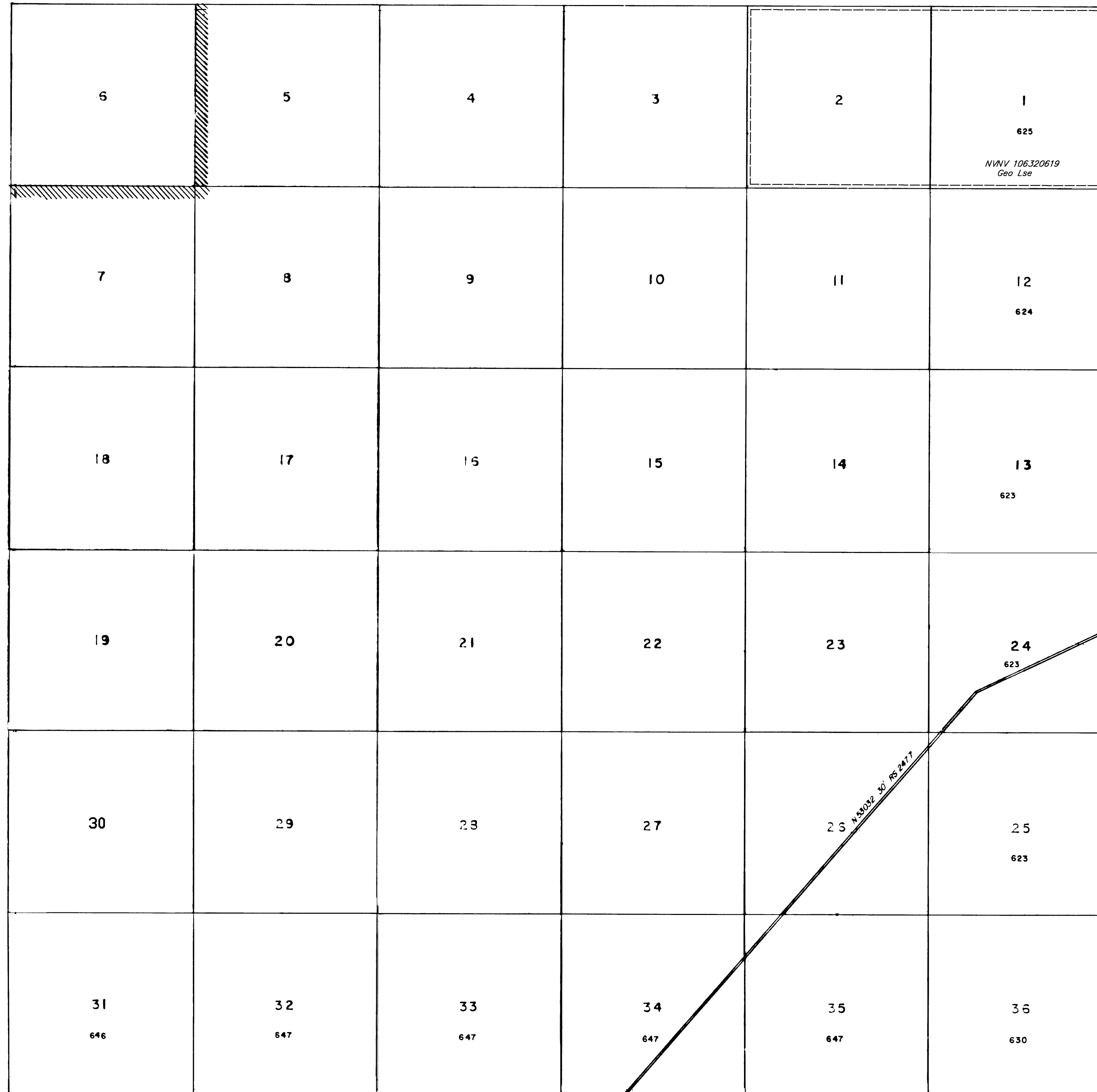
[illegible]

FOR ORDERS EFFECTING DISPOSAL OR USE OF
UNIDENTIFIED LANDS WITHDRAWN FOR CLASSIFICATION,
MINERALS, WATER AND/OR OTHER PUBLIC PURPOSES.
REFER TO INDEX OF MISCELLANEOUS DOCUMENTS.

CURRENT TO	BY	CURRENT TO	BY
01/22/2024	KD		

T. 27 N
R. 36 E

PLAT TYPE



Lat. 40° 09' 33.40"N
Long. 117° 52' 15.04"W

SCALE

10 5 0 10 20 30 60

30 chains to the inch

WARNING STATEMENT

This plat is the Bureau's representation of the Record of Title and should be used only as a graphic display of the township survey data. Records hereon do not reflect title changes which may have been effected by the lateral movements of rivers or other bodies of water. Refer to the cadastral surveys for official survey information.