

TOWNSHIP 18 NORTH RANGE 42 EAST OF THE MOUNT DIABLO MERIDIAN, NEVADA

LANDER COUNTY
BATTLE MTN GR DIST

STATUS OF PUBLIC DOMAIN
LAND AND MINERAL TITLES

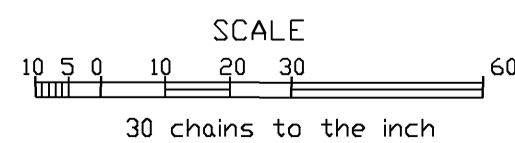
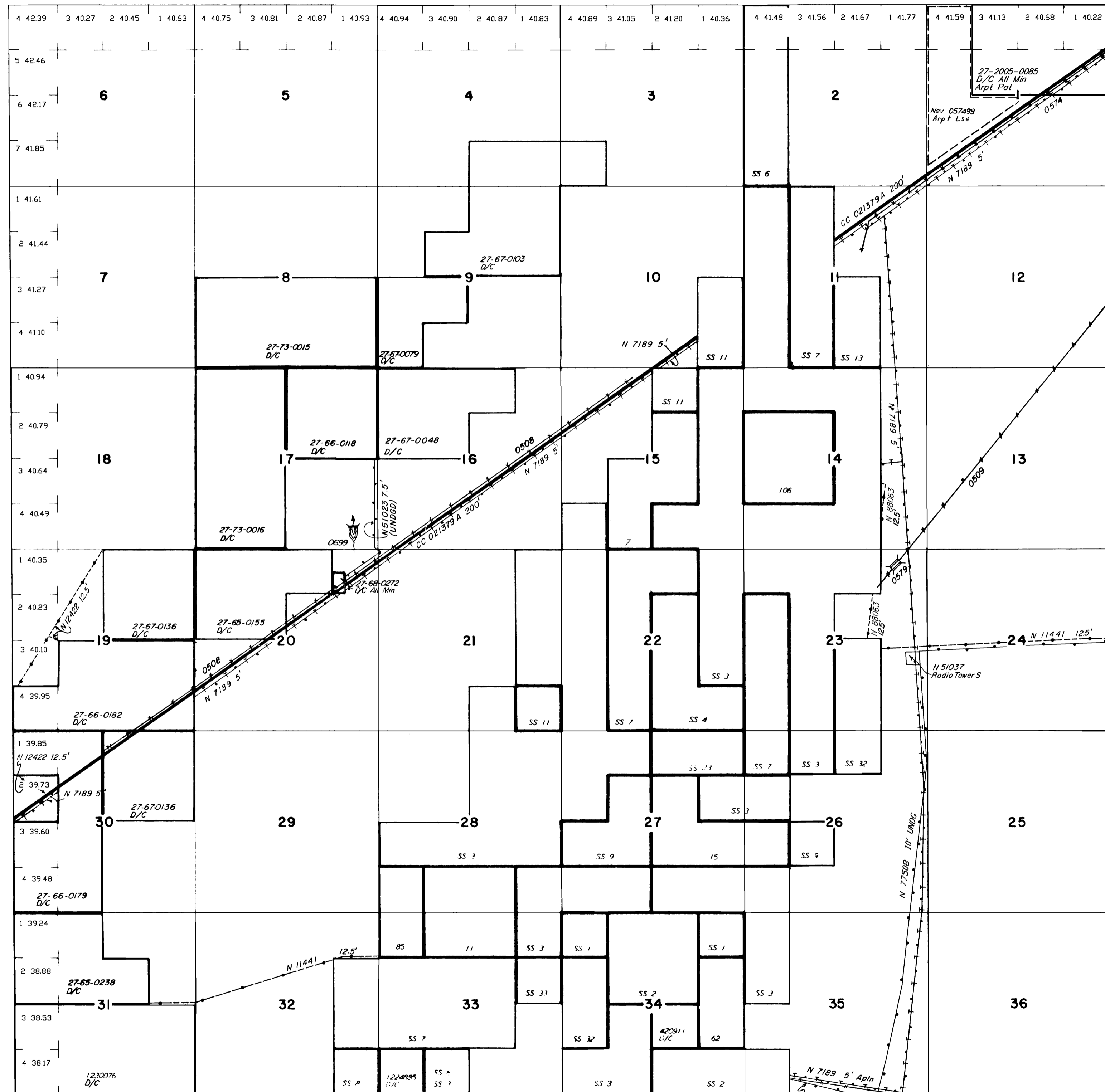
MT PLAT

INDEX TO SEGREGATED TRACTS				
RESURVEY TRACT NO	ORIGINAL SURVEY			
	T	R	SEC	SUBDIVISION

FOR ORDERS EFFECTING DISPOSAL OR USE OF UNIDENTIFIED LANDS WITHDRAWN FOR CLASSIFICATION, MINERALS, WATER AND/OR OTHER PUBLIC PURPOSES, REFER TO INDEX OF MISCELLANEOUS DOCUMENTS.

N 31790 BPS Aplan affects:

- Sec 20, N1/2 NE1/4 NE1/4 NE1/4,
SW1/4 NE1/4 NE1/4 NE1/4,
NW1/4 NE1/4 NE1/4,
NE1/4 SW1/4 NE1/4 NE1/4,
NW1/4 NE1/4 SW1/4 NE1/4,
NW1/4 SW1/4 NE1/4,
NW1/4 NW1/4 NE1/4 SW1/4,
N1/2 NW1/4 SW1/4,
NW1/4 SE1/4 NW1/4 SW1/4,
N1/2 SW1/4 NW1/4 SW1/4,
SW1/4 SW1/4 NW1/4 SW1/4
- Sec 30 Lot 2



WARNING STATEMENT

This plat is the Bureau's Record of Title and should be used only as a graphic display of the township survey data. Records hereon do not reflect title changes which may have been effected by lateral movements of rivers or other bodies of water. Refer to the cadastral surveys for official survey information.

CURRENT TO	BY
5/20/10	MS
8/31/11	MS

N-060
T. 18 N
R. 42 E