

## TOWNSHIP 17 NORTH RANGE 64 EAST OF THE MOUNT DIABLO MERIDIAN, NEVADA

STATUS OF PUBLIC DOMAIN  
LAND AND MINERAL TITLES  
AND ACQUIRED LANDS

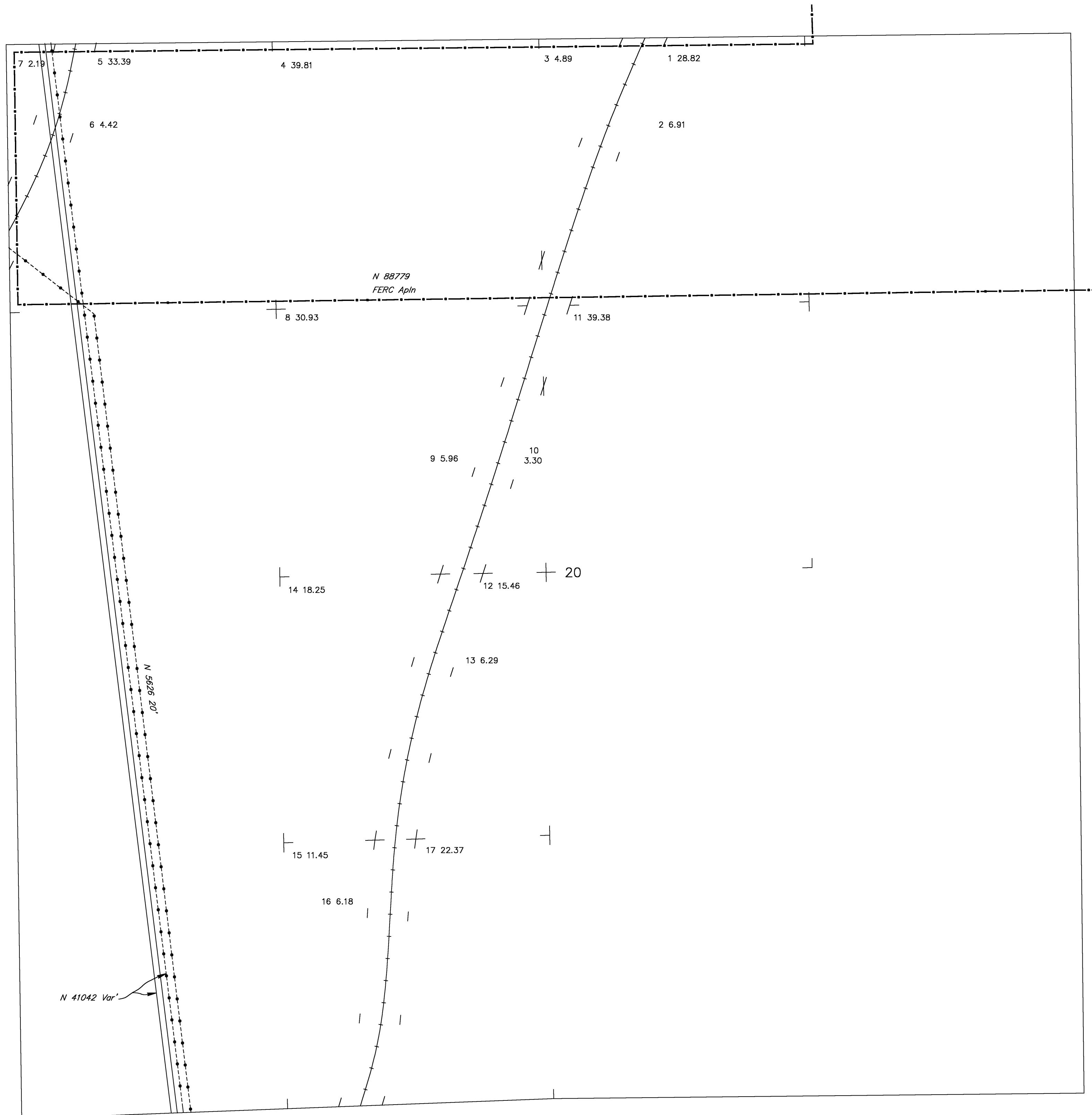
**MT/USE PLAT SUPPL Sec 20**

[illegible]

FOR ORDERS EFFECTING DISPOSAL OR USE OF  
UNIDENTIFIED LANDS WITHDRAWN FOR CLASSIFICATION,  
MINERALS, WATER AND/OR OTHER PUBLIC PURPOSES.  
REFER TO INDEX OF MISCELLANEOUS DOCUMENTS.

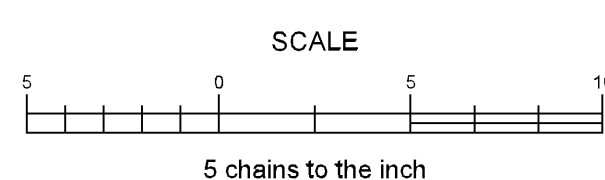
IC 002 Affects:

Sec. 20: NW<sup>1</sup>/<sub>4</sub>NW<sup>1</sup>/<sub>4</sub>NW<sup>1</sup>/<sub>4</sub>



## WARNING STATEMENT

This plat is the Bureau's representation of the Record of Title and should be used only as a graphic display of the township survey data. Records hereon do not reflect title changes which may have been effected by the lateral movements of rivers or other bodies of water. Refer to the cadastral surveys for official survey information.



CURRENT TO	BY	CURRENT TO	BY
11/26/2018	LTB		

PLAT TYPE
-----------

17 N  
64 E  
Sec 20