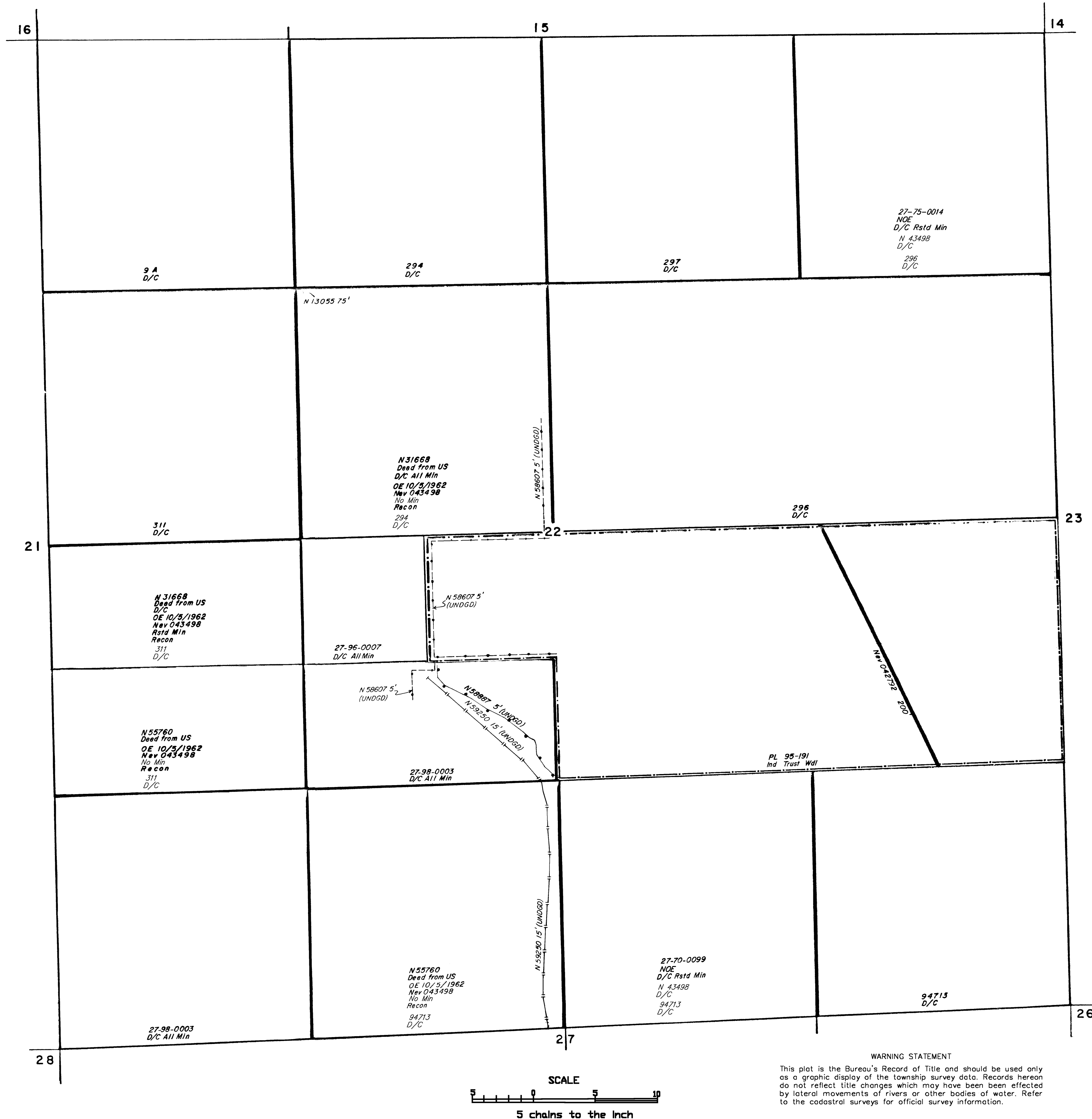


WHITE PINE COUNTY

**MTP
SUPPL SEC 22**

[illegible]

Sec 22: SE/4SE/4NW/4, NW/4NE/4SW/4, SE/4NE/4SW/4,
W/1



CAD SURVEY 6/15/81 UPDATED 7/25/81

[illegible]

N-040
T 16.N..
R. 63.E..