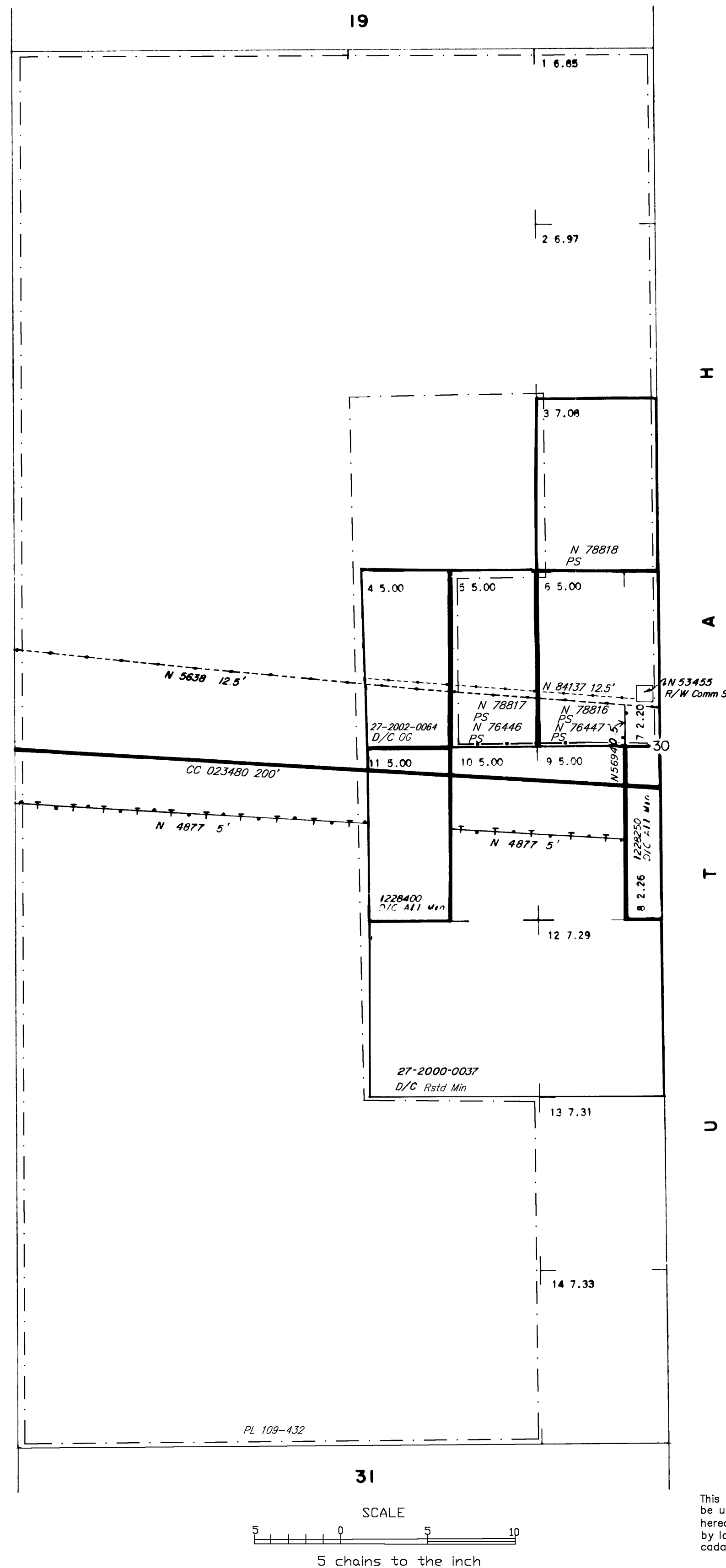


WHITE PINE COUNTY
ELY GR DIST

**OG
SUPPL Sec 30**

[illegible]

FOR ORDERS EFFECTING DISPOSAL OR USE OF
UNIDENTIFIED LANDS WITHDRAWN FOR CLASSIFICATION,
MINERALS, WATER AND/OR OTHER PUBLIC PURPOSES,
REFER TO INDEX OF MISCELLANEOUS DOCUMENTS.



CURRENT TO	BY
8/15/02	MS
6/12/08	MS
7/14/10	MS
9/20/11	MS
10/31/11	MS
9/19/13	MS
10/13/16	DMG

N-040
T. 14N
R. 71E