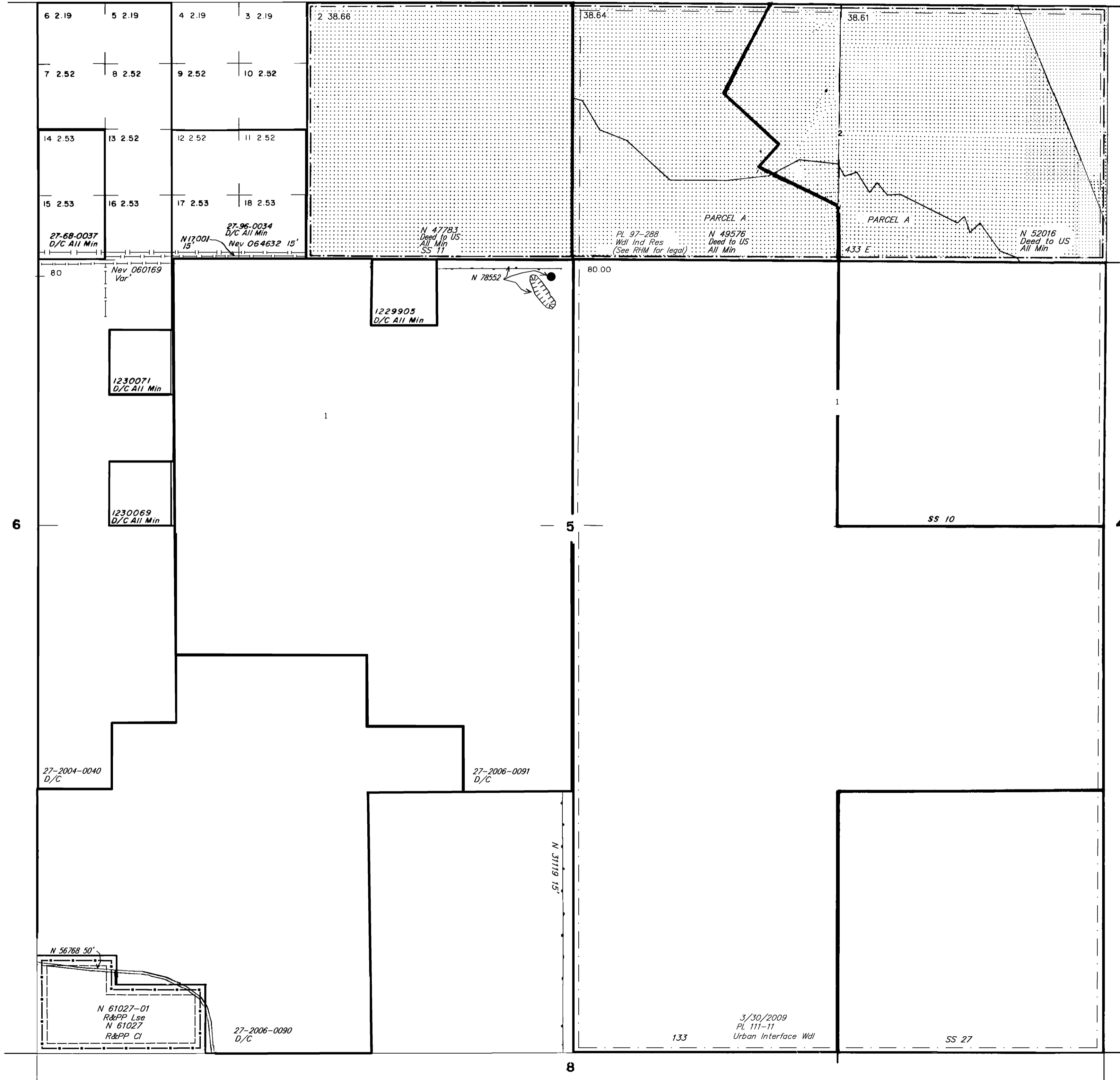


# TOWNSHIP 14 NORTH RANGE 20 EAST OF THE MOUNT DIABLO MERIDIAN, NEVADA

CARSON CITY GR DIST

STATUS OF PUBLIC DOMAIN  
LAND AND MINERAL TITLES  
AND ACQUIRED LANDS

## MTP Suppl Sec 5



INDEX TO SEGREGATED TRACTS					
RESURVEY	ORIGINAL SURVEY				
	TRACT NO	T	R	SEC	SUBDIVISION

FOR ORDERS EFFECTING DISPOSAL OR USE OF UNIDENTIFIED LANDS WITHDRAWN FOR CLASSIFICATION, MINERALS, WATER AND/OR OTHER PUBLIC PURPOSES. REFER TO INDEX OF MISCELLANEOUS DOCUMENTS.

Certain lands in Sec 5 of this township is affected by unrecorded public dedications for roads and utilities due to previous small tract classifications. See the historical index for specific lands affected by small tract classifications.

PL 97-288 Wdl Ind Res excludes lands east of V&T R/W & north of Clear Creek in N1/2NE1/4.

---

---

---

---

---

---

---

---

---

---

---

---

---

---

---

---

---

---

---

---

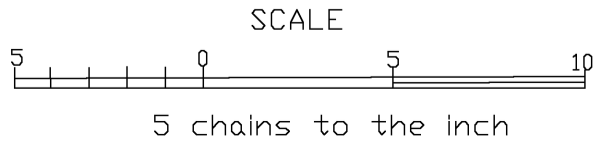
---

---

---

---

CURRENT TO	BY	CURRENT TO	BY
11/26/2024	MR		



WARNING STATEMENT  
This plat is the Bureau's representation of the Record of Title and should be used only as a graphic display of the township survey data. Records hereon do not reflect title changes which may have been effected by the lateral movements of rivers or other bodies of water. Refer to the cadastral surveys for official survey information.

PLAT TYPE

T. 14 N  
R. 20 E