

TOWNSHIP 13 NORTH RANGE 25 EAST OF THE MOUNT DIABLO MERIDIAN, NEVADA

CARSON CITY GR DIST

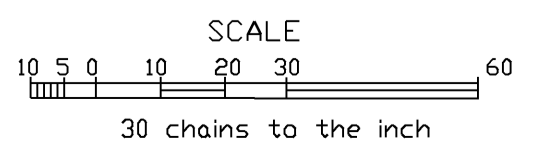
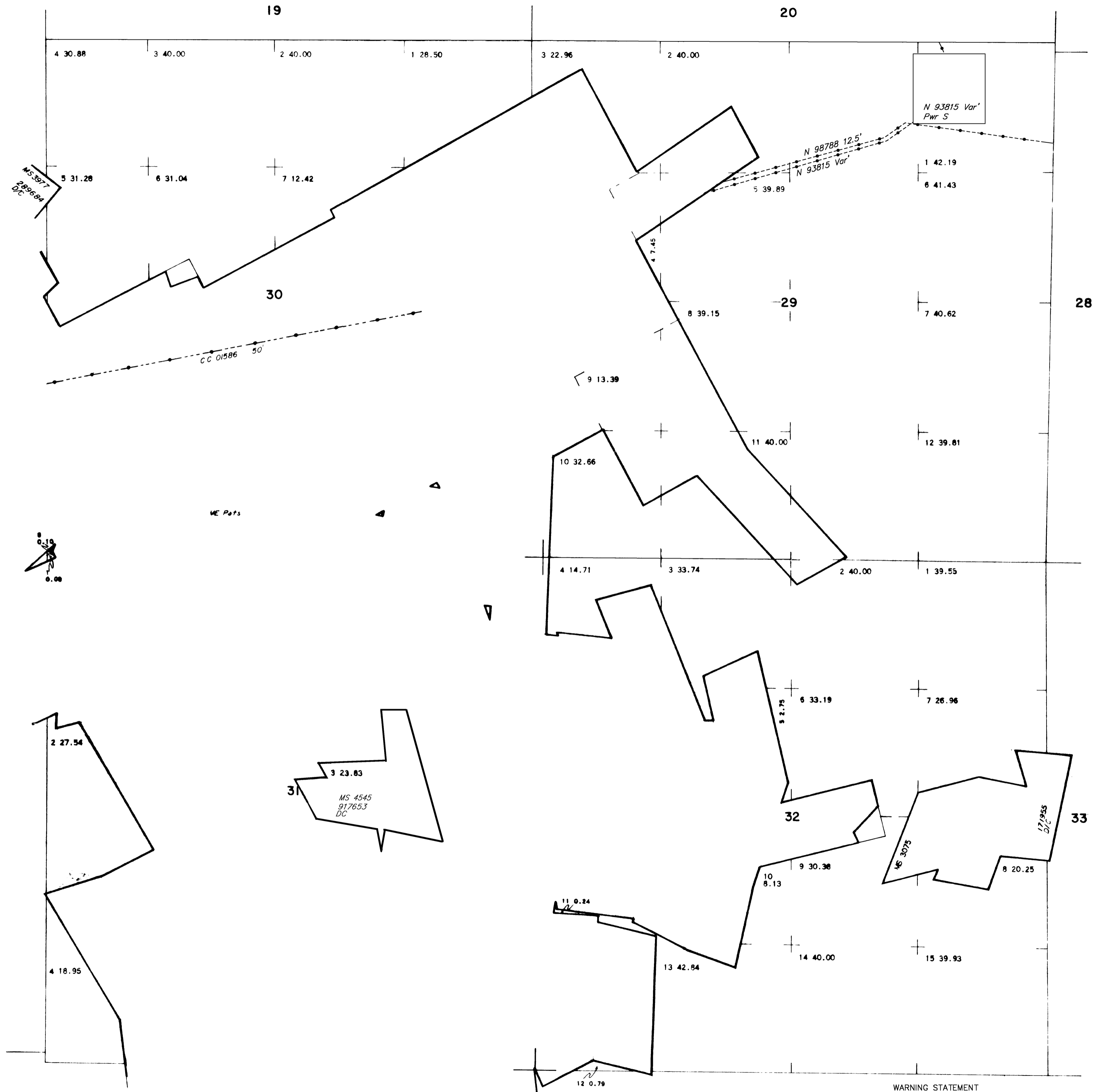
STATUS OF PUBLIC DOMAIN
LAND AND MINERAL TITLES

**MTP
SUPPL Sec 29,30,31,32**

INDEX TO SEGREGATED TRACTS				
RESURVEY TRACT NO	ORIGINAL SURVEY			
T	R	SEC	SUBDIVISION	

FOR ORDERS EFFECTING DISPOSAL OR USE OF UNIDENTIFIED LANDS WITHDRAWN FOR CLASSIFICATION, MINERALS, WATER AND/OR OTHER PUBLIC PURPOSES, REFER TO INDEX OF MISCELLANEOUS DOCUMENTS.

N 56938 R/W Water Pipeline, Water Tank, Pumping Station B Wall
 Sec 20: Lots 2-4, W/2 NE 1/4, NE 1/4 NW 1/4, W/1
 Sec 21: SW 1/4 SW 1/4 SW 1/4 SW 1/4, W/1
 Sec 28: S 1/2 S 1/2 NW 1/4 NE 1/4, NW 2 NW 1/4, W/1
 Sec 29: Lot 1, W/1



WARNING STATEMENT
 This plot is the Bureau's representation of the Record of Title and should be used only as a graphic display of the township survey data. Records hereon do not reflect title changes which may have been effected by the lateral movements of rivers or other bodies of water. Refer to the cadastral surveys for official survey information.

CURRENT TO	BY
11/8/13	DMG
2/17/21	ART
01/24/2022	ART

N 030
T. 13 N.
R. 25 E.