

PARTIALLY SURVEYED TOWNSHIP 12 NORTH RANGE 55½ EAST OF THE MOUNT DIABLO MERIDIAN, NEVADA

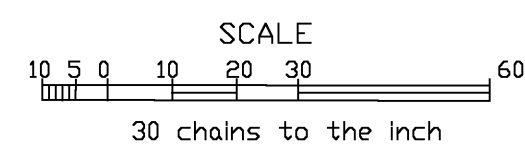
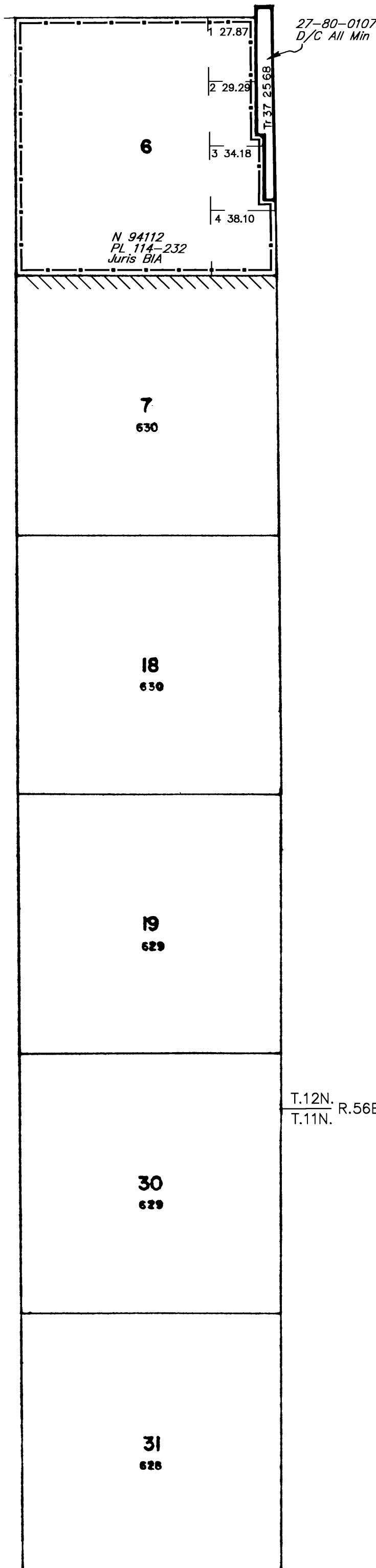
PROTRACTION DIAGRAM No. 123

NYE COUNTY
ELY GR DIST

STATUS OF PUBLIC DOMAIN LAND AND MINERAL TITLES AND ACQUIRED LANDS

OG PLAT

Latitude 38°54'43.818" N.
Longitude 115°44'40.955" W.
NAD83 (2011) (EPOCH: 2010.0000)

[illegible]

FOR ORDERS EFFECTING DISPOSAL OR USE OF
UNIDENTIFIED LANDS WITHDRAWN FOR CLASSIFICATION,
MINERALS, WATER AND/OR OTHER PUBLIC PURPOSES.
REFER TO INDEX OF MISCELLANEOUS DOCUMENTS.

CURRENT TO	BY	CURRENT TO	BY
12/23/2002	MS		
01/25/2003	MS		
01/07/2009	MS		
06/30/2017	CTB		
09/26/2022	LAJ		

This plat is the Bureau's representation of the Record of Title and should be used only as a graphic display of the township survey data. Records hereon do not reflect title changes which may have been effected by the lateral movements of rivers or other bodies of water. Refer to the cadastral surveys for official survey information.

T. 12 N
R. 551/2 E

PLAT TYPE