

TOWNSHIP 11 NORTH RANGE 65 EAST OF THE MOUNT DIABLO MERIDIAN, NEVADA

WHITE PINE COUNTY

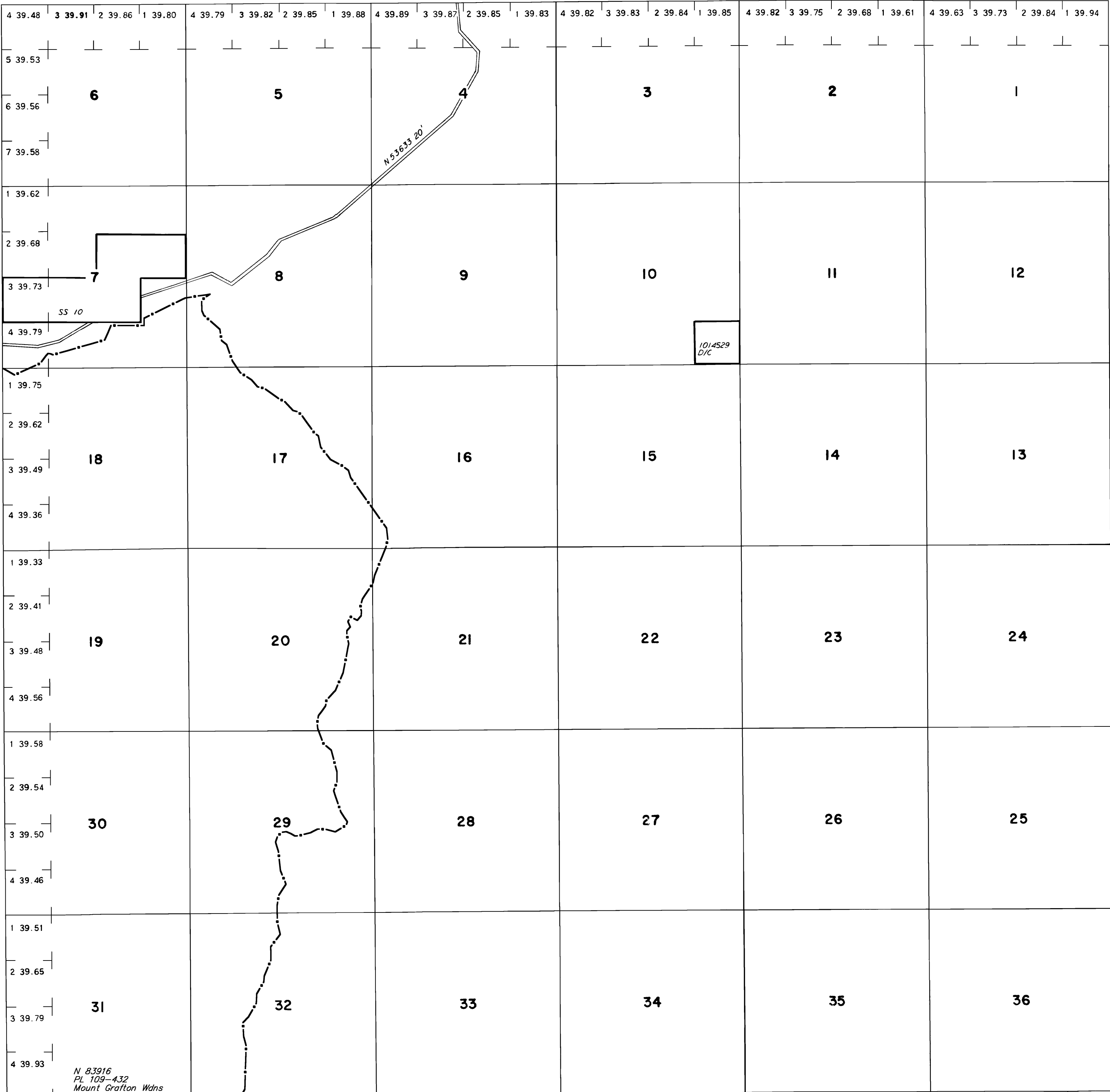
STATUS OF PUBLIC DOMAIN LAND AND MINERAL TITLES

MT PLAT

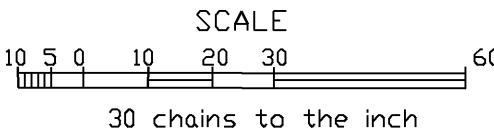
[illegible]

FOR ORDERS EFFECTING DISPOSAL OR USE OF UNIDENTIFIED LANDS WITHDRAWN FOR CLASSIFICATION MINERALS, WATER AND/OR OTHER PUBLIC PURPOSES, REFER TO INDEX OF MISCELLANEOUS DOCUMENTS.

RI 232 Hydrological study affects Sec 4,6,7,8



N 83916
PL 109-432
Mount Grafton Wdns



WARNING STATEMENT

This plat is the Bureau's representation of the Record of Title and should be used only as a graphic display of the township survey data. Records hereon do not reflect title changes which may have been effected by the lateral movements of rivers or other bodies of water. Refer to the cadastral surveys for official survey information.

CURRENT TO	BY	CURRENT TO	BY
1/12/2024	ART		

N-040
T. 11N.
R. 65E

PLAT TYPE