

MINERAL COUNTY
CARSON CITY GR DIST

MTP SUPPL SEC 34

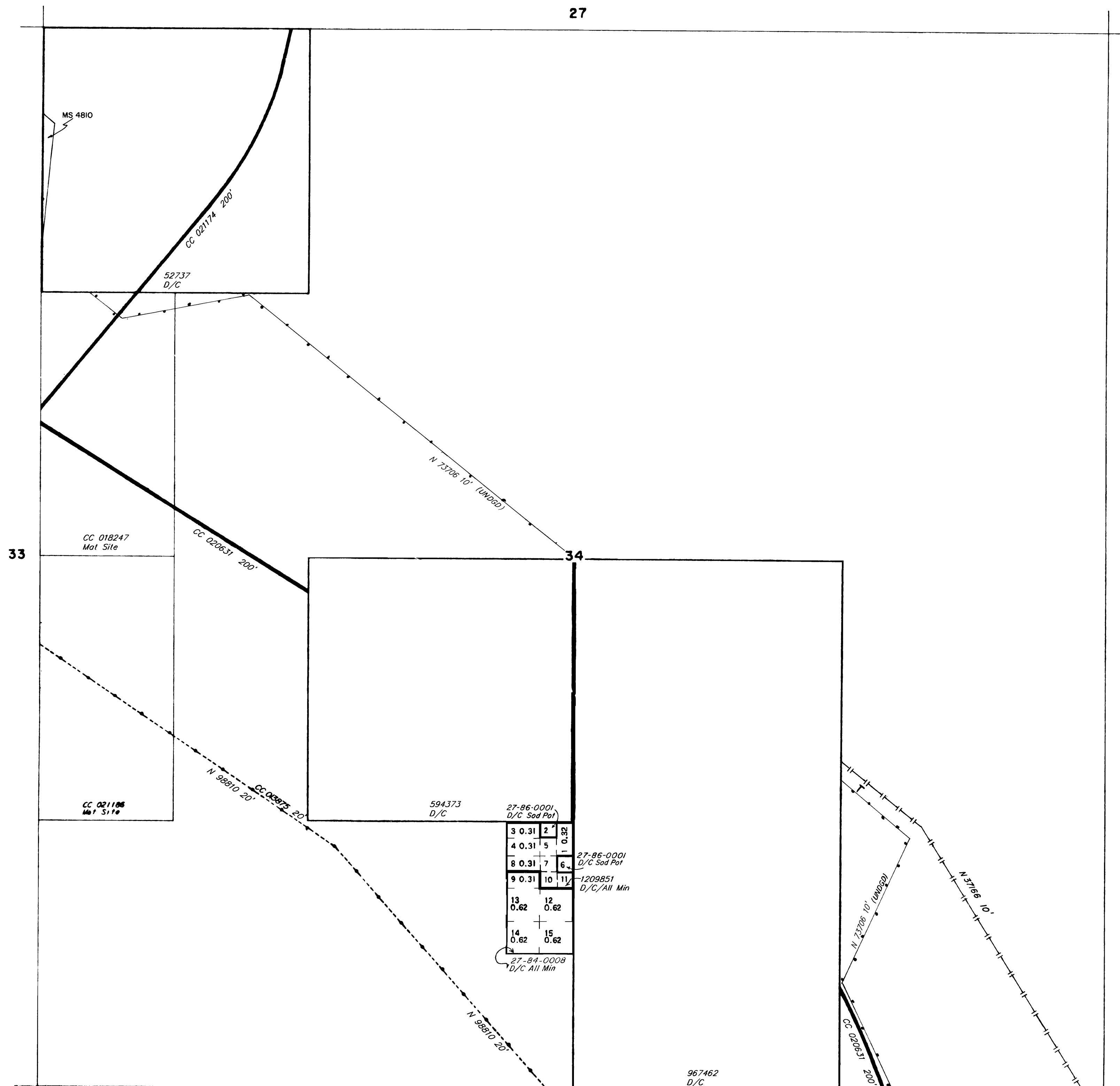
[illegible]

FOR ORDERS EFFECTING DISPOSAL OR USE OF
UNIDENTIFIED LANDS WITHDRAWN FOR CLASSIFICATION,
MINERALS, WATER AND/OR OTHER PUBLIC PURPOSES.
REFER TO INDEX OF MISCELLANEOUS DOCUMENTS.

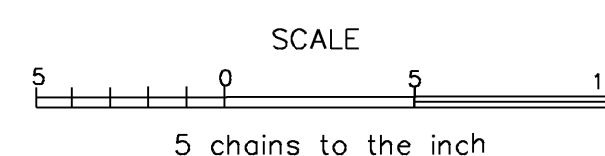
CURRENT TO	BY	CURRENT TO	BY
01/10/2003	MS		
06/27/2005	MS		
12/04/2008	MS		
08/03/2021	LAJ		

PLAT TYPE

T. 08 N
R. 34 E



Note: Lots 2, 5, 6, 7, 10, 11 contain 0.16 A



WARNING STATEMENT

This plat is the Bureau's representation of the Record of Title and should be used only as a graphic display of the township survey data. Records hereon do not reflect title changes which may have been effected by the lateral movements of rivers or other bodies of water. Refer to the cadastral surveys for official survey information.