

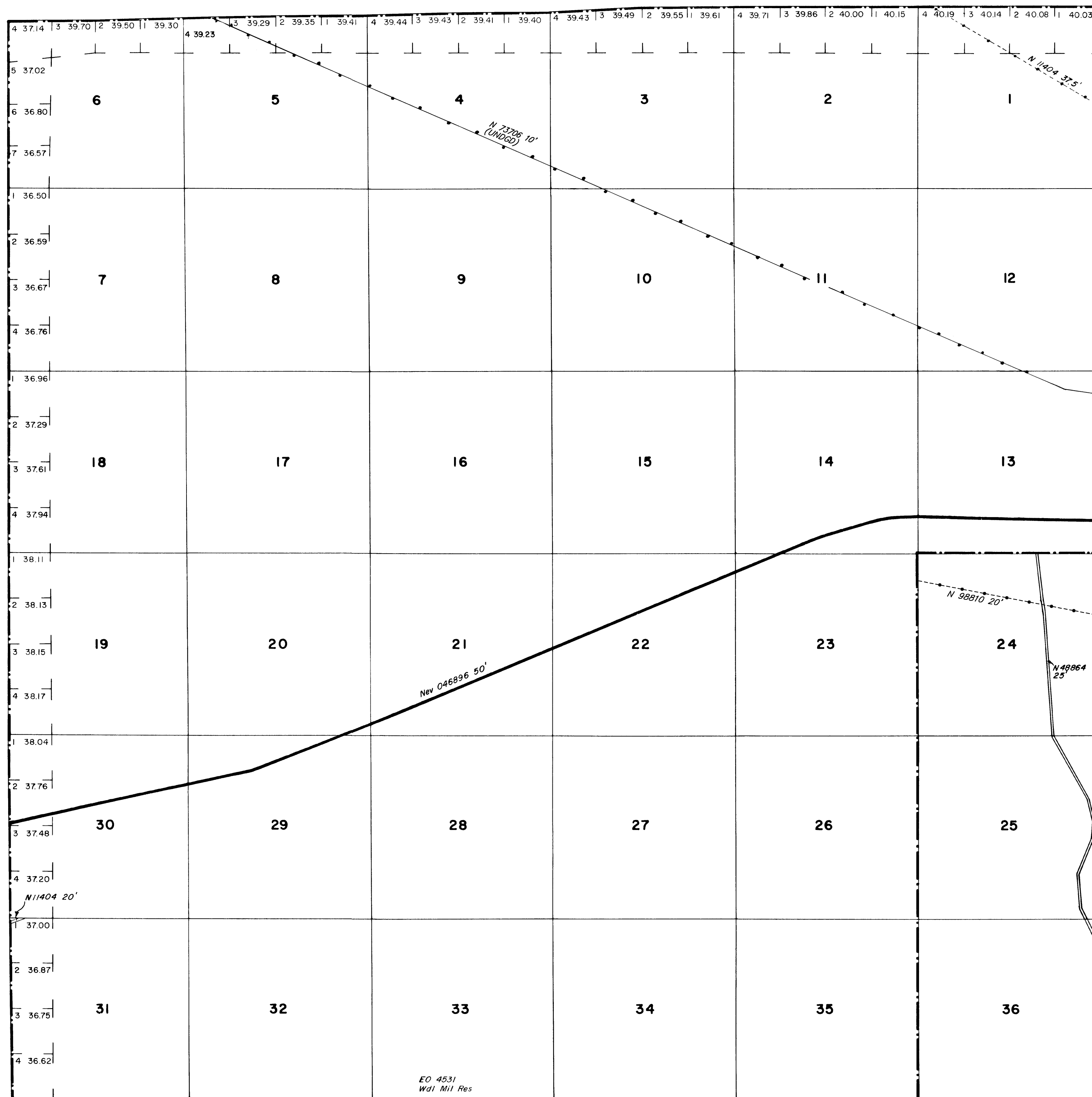
MINERAL COUNTY
CARSON CITY GR DIST

MT PLAT

FOR ORDERS EFFECTING DISPOSAL OR USE OF
UNIDENTIFIED LANDS WITHDRAWN FOR CLASSIFICATION,
MINERALS, WATER AND/OR OTHER PUBLIC PURPOSES.
REFER TO INDEX OF MISCELLANEOUS DOCUMENTS.

T. 8 N
R. 31 E

PLAT TYPE



WARNING STATEMENT

This plat is the Bureau's representation of the Record of Title and should be used only as a graphic display of the township survey data. Records hereon do not reflect title changes which may have been effected by the lateral movements of rivers or other bodies of water. Refer to the cadastral surveys for official survey information.

