

STATUS OF PUBLIC DOMAIN LAND AND MINERAL TITLES

[illegible]

FOR ORDERS EFFECTING DISPOSAL OR USE OF
UNIDENTIFIED LANDS WITHDRAWN FOR CLASSIFICATION,
MINERALS, WATER AND/OR OTHER PUBLIC PURPOSES,
REFER TO INDEX OF MISCELLANEOUS DOCUMENTS.

[illegible]

N-060
T. 7N
R. 54E

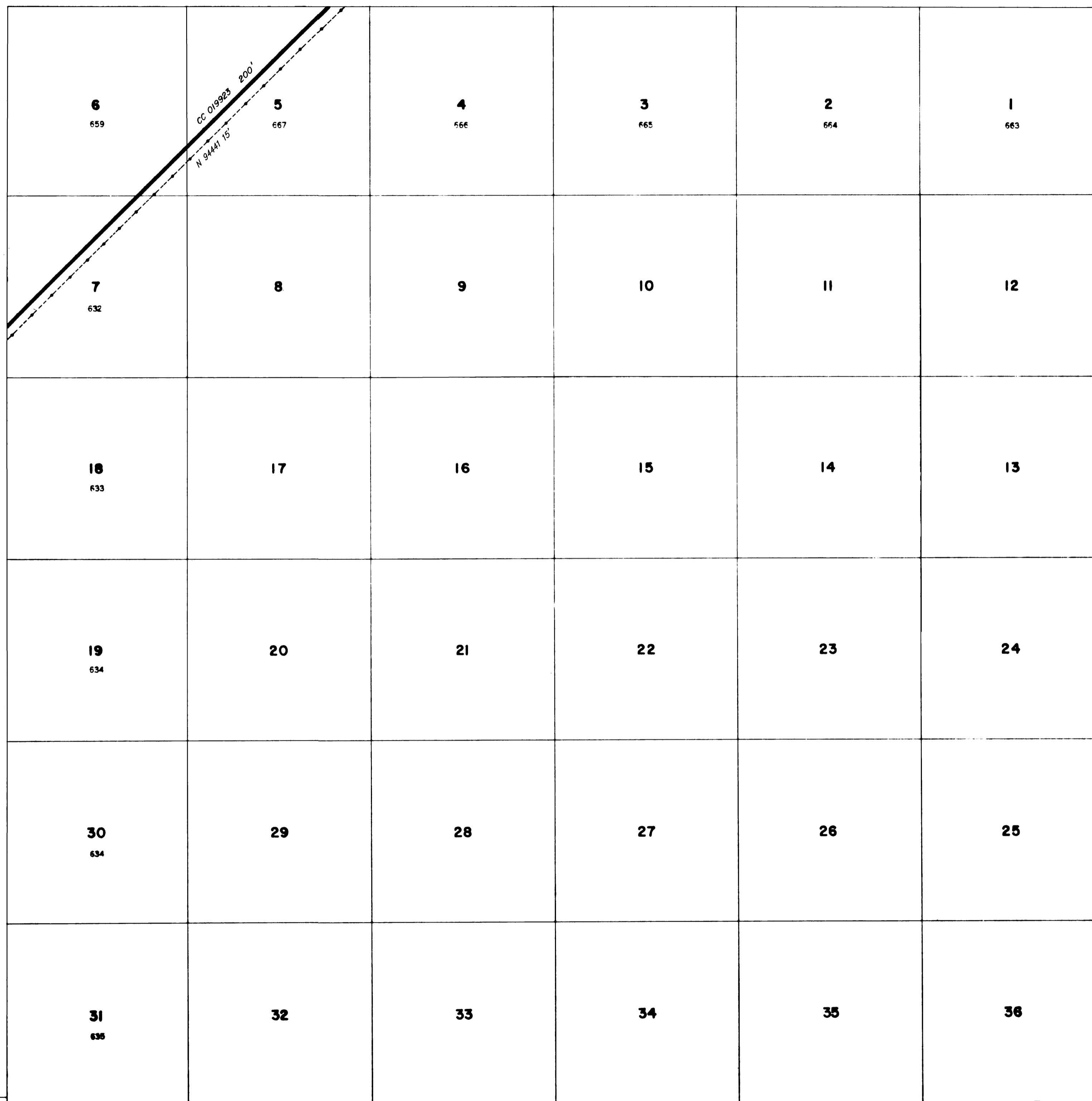


Diagram of a 30-chain scale. The scale is marked from 0 to 60 chains. Major markings are at 0, 10, 20, 30, and 60. Minor markings are at 5, 15, 25, and 35. The text "SCALE" is above the scale, and "30 chains to the inch" is below it.

WARNING STATEMENT

This plat is the Bureau's Record of Title and should be used only as a graphic display of the township survey data. Records hereon do not reflect title changes which may have been effected by lateral movements of rivers or other bodies of water. Refer to the cadastral surveys for official survey information.