

## STATUS OF PUBLIC DOMAIN LAND AND MINERAL TITLES

## OG PLAT

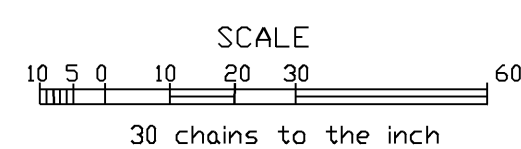
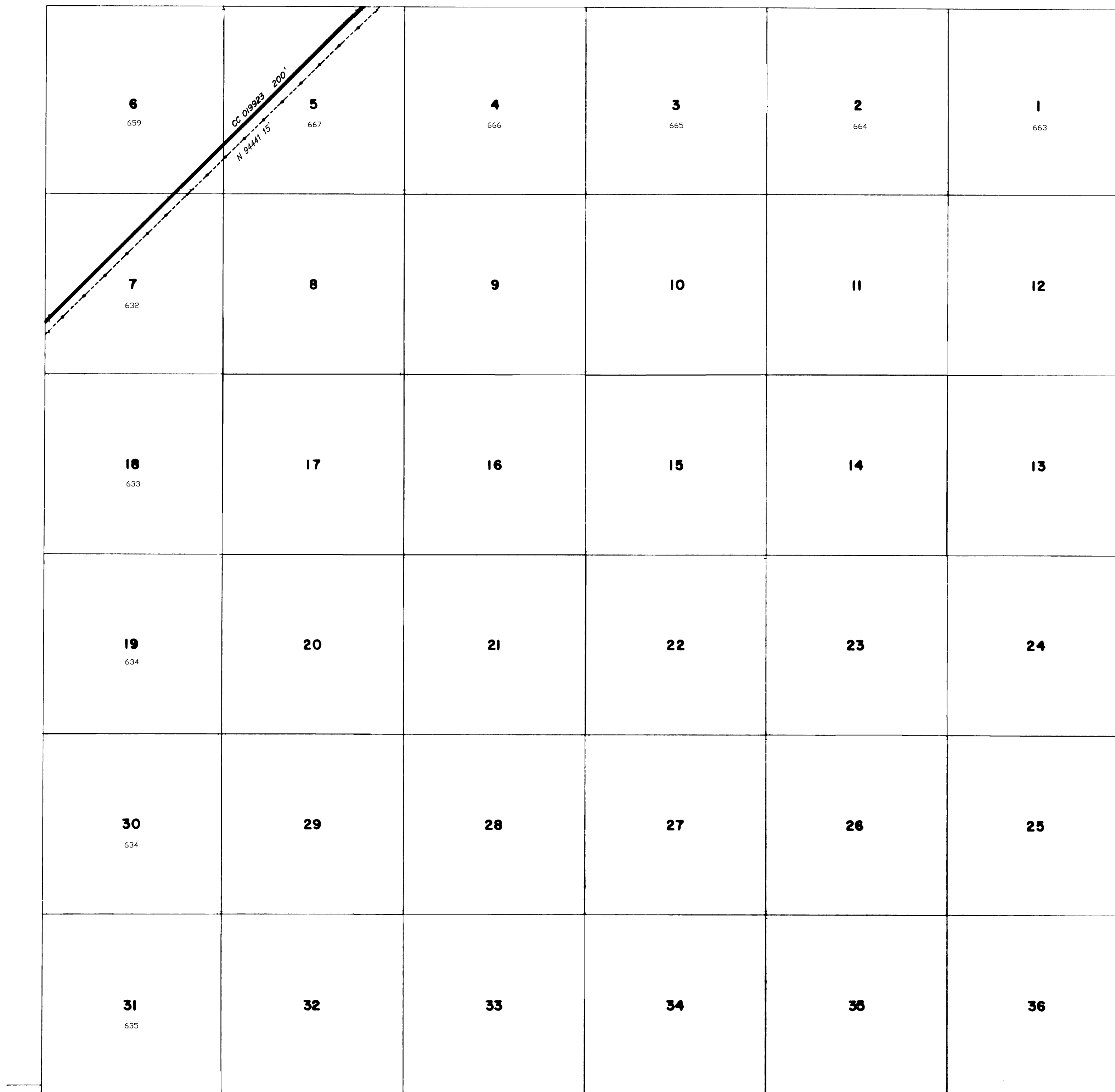
[illegible]

FOR ORDERS EFFECTING DISPOSAL OR USE OF  
UNIDENTIFIED LANDS WITHDRAWN FOR CLASSIFICATION,  
MINERALS, WATER AND/OR OTHER PUBLIC PURPOSES,  
REFER TO INDEX OF MISCELLANEOUS DOCUMENTS.

[illegible]

CURRENT TO	BY
6/28/11	MS
2/14/13	DMG
<b>2/26/15</b>	<b>MS</b>
5/26/15	MS
6/17/15	MS
7/9/15	DMG
8/10/16	MS

N-060  
T. 7N  
R. 54E



## WARNING STATEMENT

This plot is the Bureau's Record of Title and should be used only as a graphic display of the township survey data. Records hereon do not reflect title changes which may have been effected by lateral movements of rivers or other bodies of water. Refer to the cadastral surveys for official survey information.