

## STATUS OF PUBLIC DOMAIN LAND AND MINERAL TITLES

MT/USE PLAT

[illegible]

FOR ORDERS EFFECTING DISPOSAL OR USE OF  
UNIDENTIFIED LANDS WITHDRAWN FOR CLASSIFICATION,  
MINERALS, WATER AND/OR OTHER PUBLIC PURPOSES,  
REFER TO INDEX OF MISCELLANEOUS DOCUMENTS.

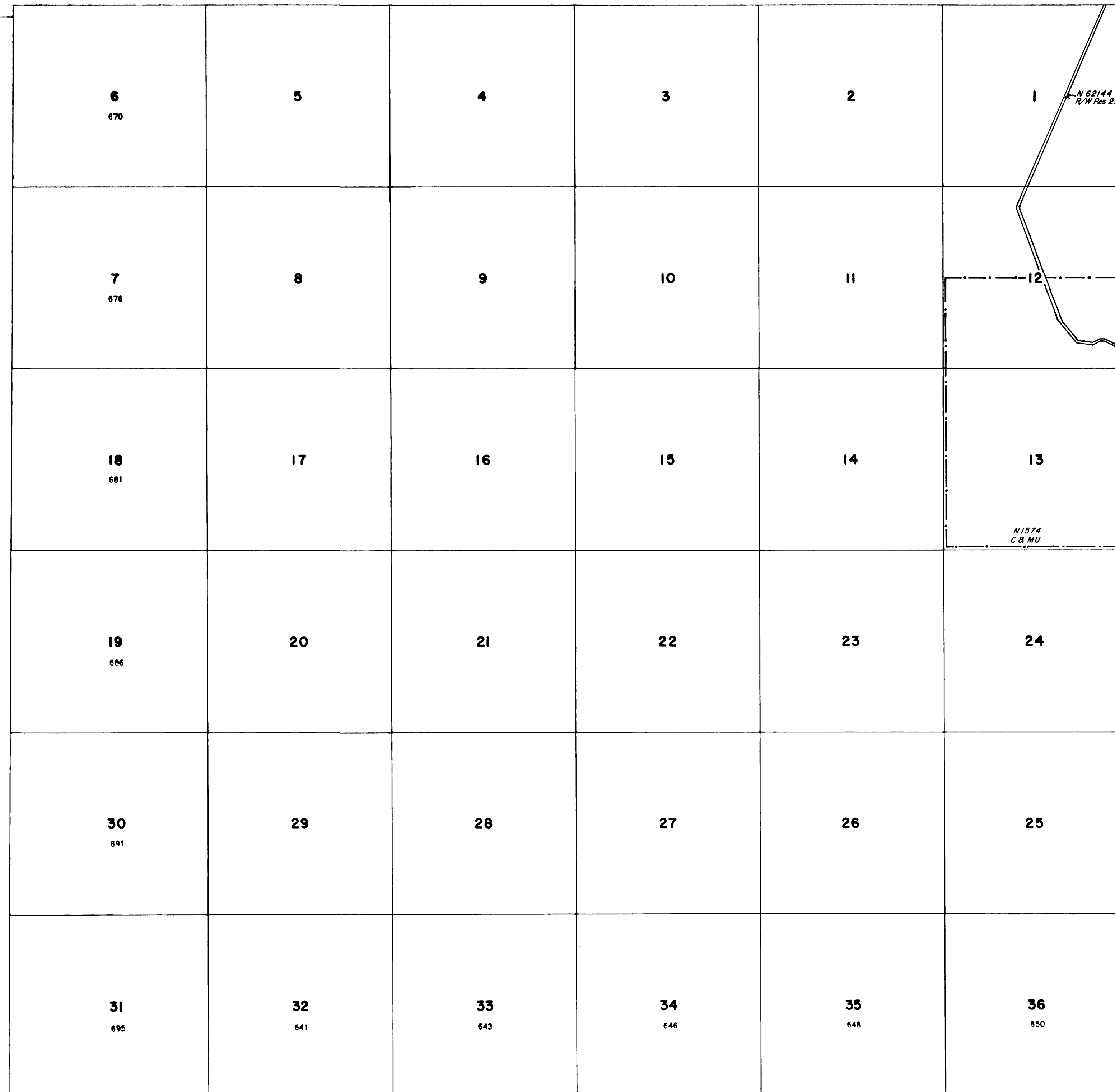
N 1574 CI Rem Segr 12/27/1968 affects To Sec 12 SI/2, B Segr 13  
further segr from all forms of appropriation under the public land  
laws, including the general mining laws but not the Rec APP Act or  
the mineral leasing and material sale laws

WSA (see Dist/SO maps for exact Bdrs)

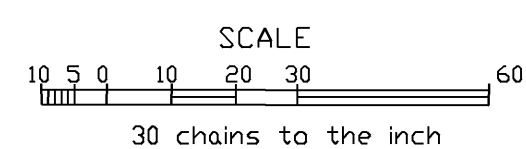
*Secs 3-36*

N 60851 R/W Res Recreational Bench Site

Sec 12: NW 1/4 SW 1/4, W/1



Lat. 38°19'45.450"N  
Long. 116°10'31.408"W



### WARNING STATEMENT

This plat is the Bureau's representation of the Record of Title and should be used only as a graphic display of the township survey data. Records hereon do not reflect title changes which may have been effected by the lateral movements of rivers or other bodies of water. Refer to the cadastral surveys for official survey information.

CURRENT TO	BY	CURRENT TO	BY
5/31/19	FC		
12/17/2021	ART		

PLAT TYPE
-----------

N-060  
6 N  
52E